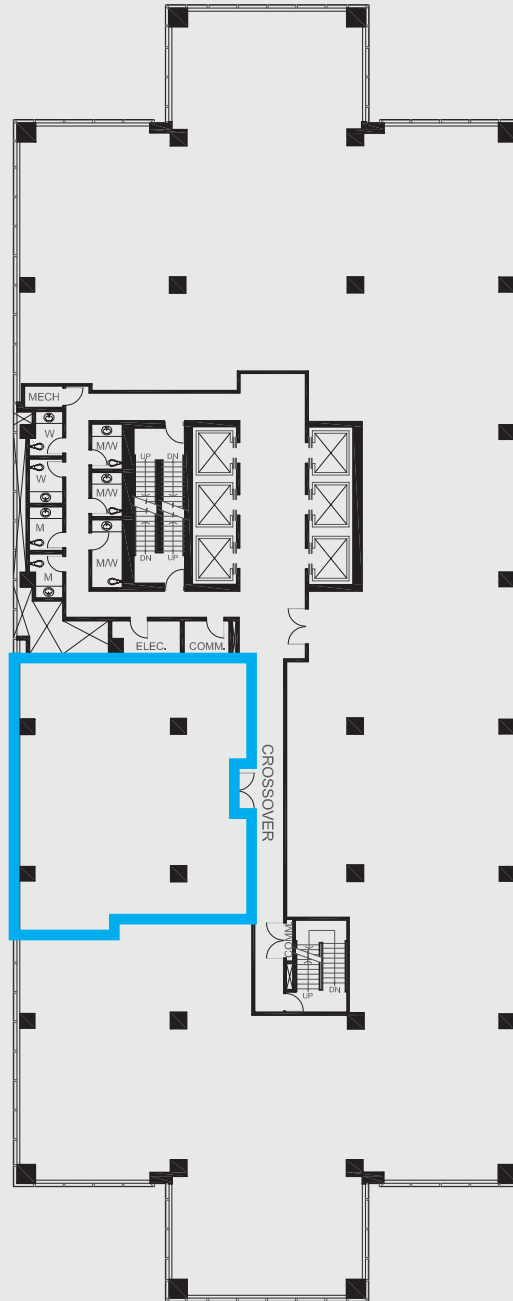


# 10250 101 ST. NW

Edmonton, Alberta



SUITE	SQ. FT.	TYPE	AVAILABILITY	COMMENTS
1750	16,015	Office	Immediate	Base-Building Condition, Turn-key opportunities available.

Cameron Martin  
Director, Leasing  
587.635.5335  
cmartin@epicis.com

Epic Investment Services



epicinvestmentservices.com

All information contained herein is from sources deemed reliable; however, no representation or warranty is made to the accuracy thereof Epic Investment Services (Alberta) Inc.