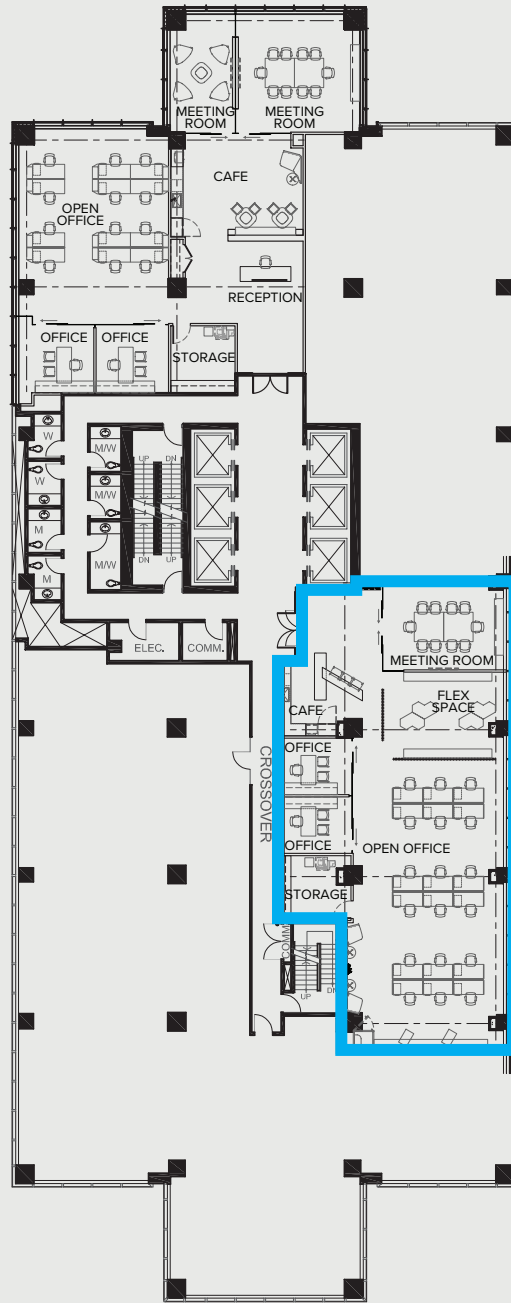


10250 101 ST. NW

Edmonton, Alberta



SUITE	SQ. FT.	TYPE	AVAILABILITY	COMMENTS
730	3,343	Office	Immediate	Show Suite - 2 offices, boardroom, kitchen/reception, copy room and open area.

Cameron Martin
 Director, Leasing
 587.635.5335
 cmartin@epicis.com

Epic Investment Services



epicinvestmentservices.com

All information contained herein is from sources deemed reliable; however, no representation or warranty is made to the accuracy thereof Epic Investment Services (Alberta) Inc.