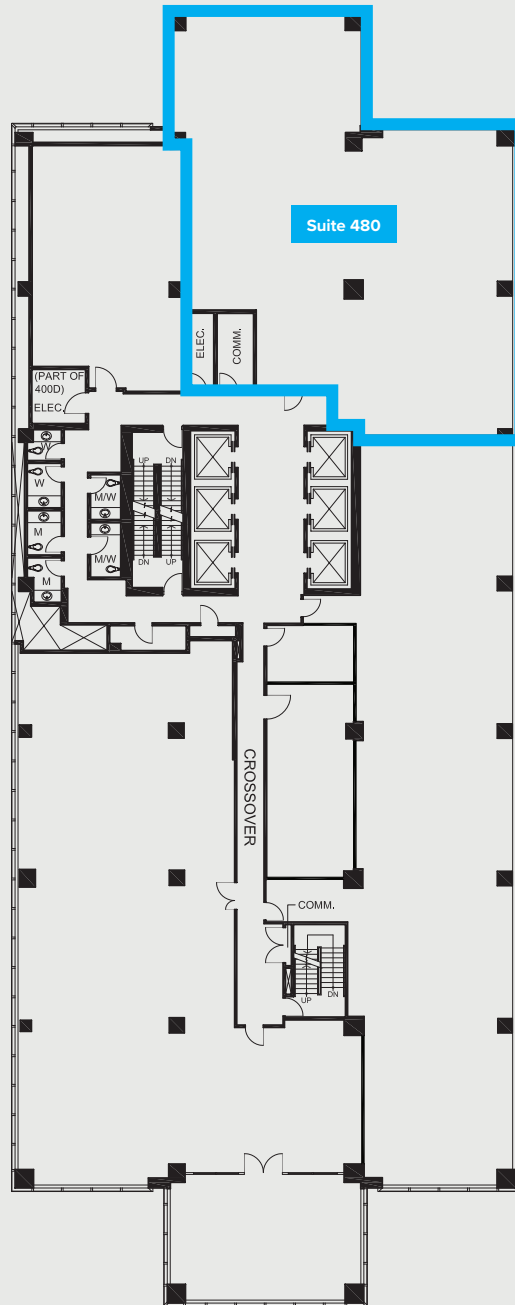


10250 101 ST. NW

Edmonton, Alberta



| SUITE | SQ. FT. | TYPE | AVAILABILITY | COMMENTS |
|-------|---------|--------|--------------|---|
| 480 | 3,852 | Office | Immediate | Warm shell condition. Turn-key opportunities available. |

Cameron Martin
Director, Leasing
587.635.5335
cmartin@epicis.com

Epic Investment Services



epicinvestmentservices.com

All information contained herein is from sources deemed reliable; however, no representation or warranty is made to the accuracy thereof Epic Investment Services (Alberta) Inc.