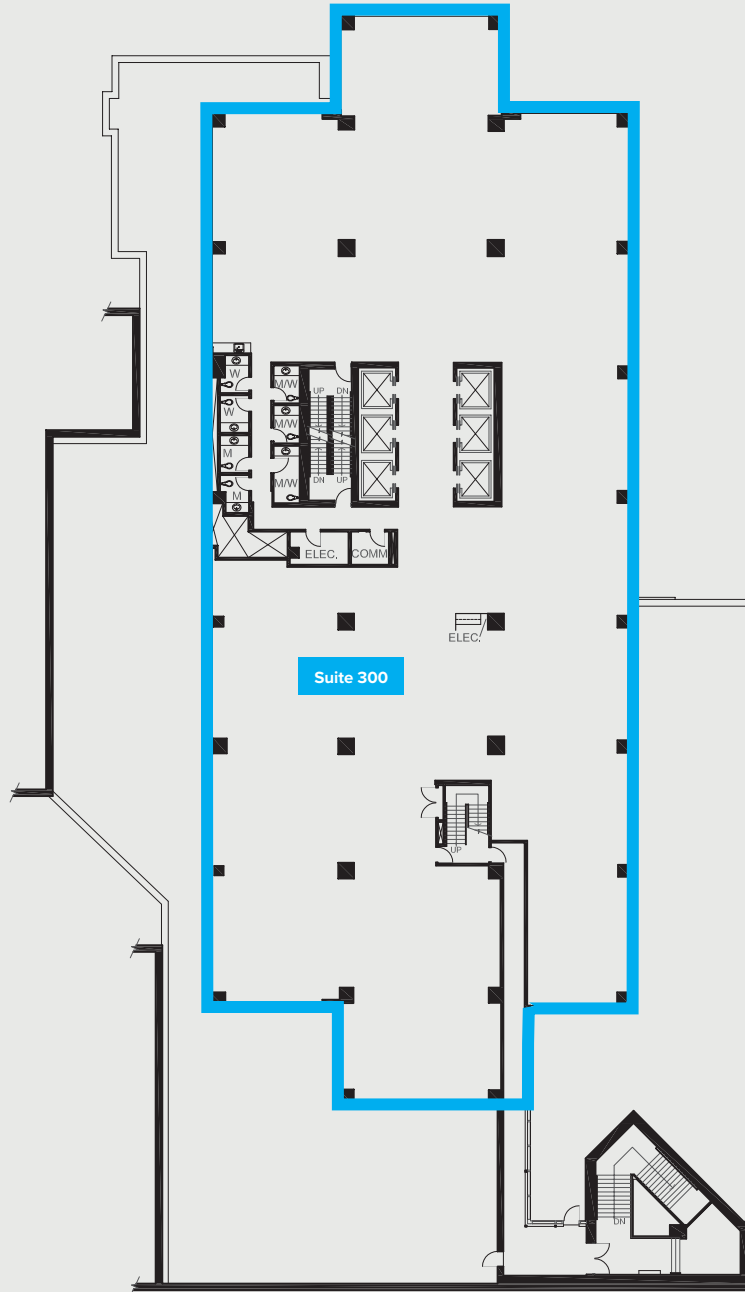


# 10250 101 ST. NW

Edmonton, Alberta



SUITE	SQ. FT.	TYPE	AVAILABILITY	COMMENTS
300	16,928	Office	Immediate	Full floor (undeveloped). Base-building condition, Turn-key opportunities available.

Cameron Martin  
Director, Leasing  
587.635.5335  
cmartin@epicis.com

Epic Investment Services



epicinvestmentservices.com

All information contained herein is from sources deemed reliable; however, no representation or warranty is made to the accuracy thereof Epic Investment Services (Alberta) Inc.