

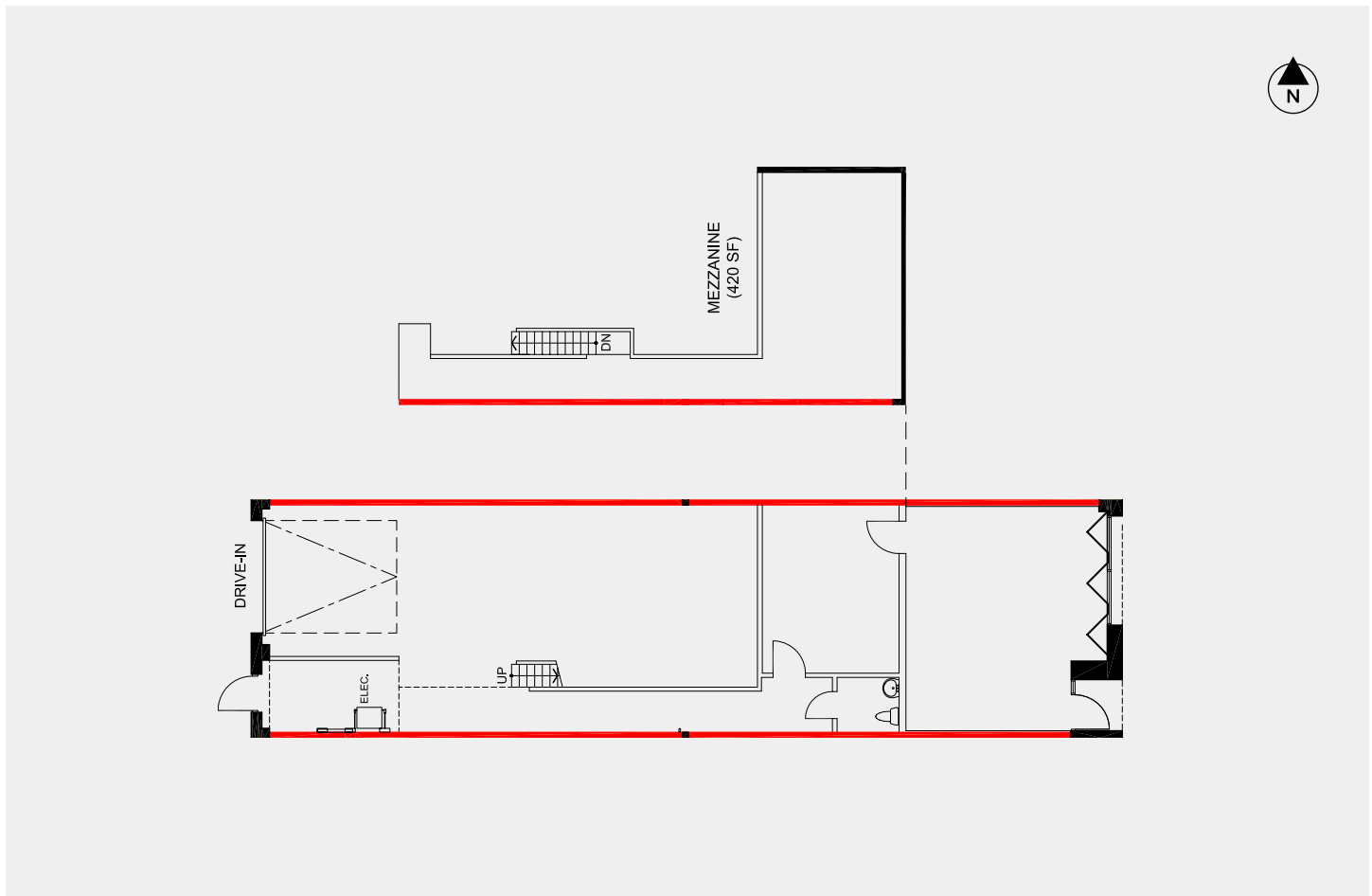
50 Viceroy Road

Unit 21: 1,544 sq. ft.

UNIT	UNIT 21
SIZE (SQ. FT.)	1,544
OFFICE	15%
CLEAR HEIGHT	15'4"
SHIPPING	1 Drive-in Door
ASKING PRICE	\$23.00 per sq. ft.
TMI	\$5.90 per sq. ft.
POSSESSION	Jan, 2024



*Outlines are approximate



Spencer Mussett*
 Senior Vice President
 416 495 6273
 spencer.mussett@cbre.com

Tyrone Murray
 Sales Representative
 416 495 6243
 tyrone.murray@cbre.com

CBRE Limited, Real Estate Brokerage
 2005 Sheppard Ave E, Suite 800
 Toronto, Ontario, M2J 5B4
 +1 416 494 0600 • www.cbre.com

PROUDLY MANAGED BY:



*Sales Representative