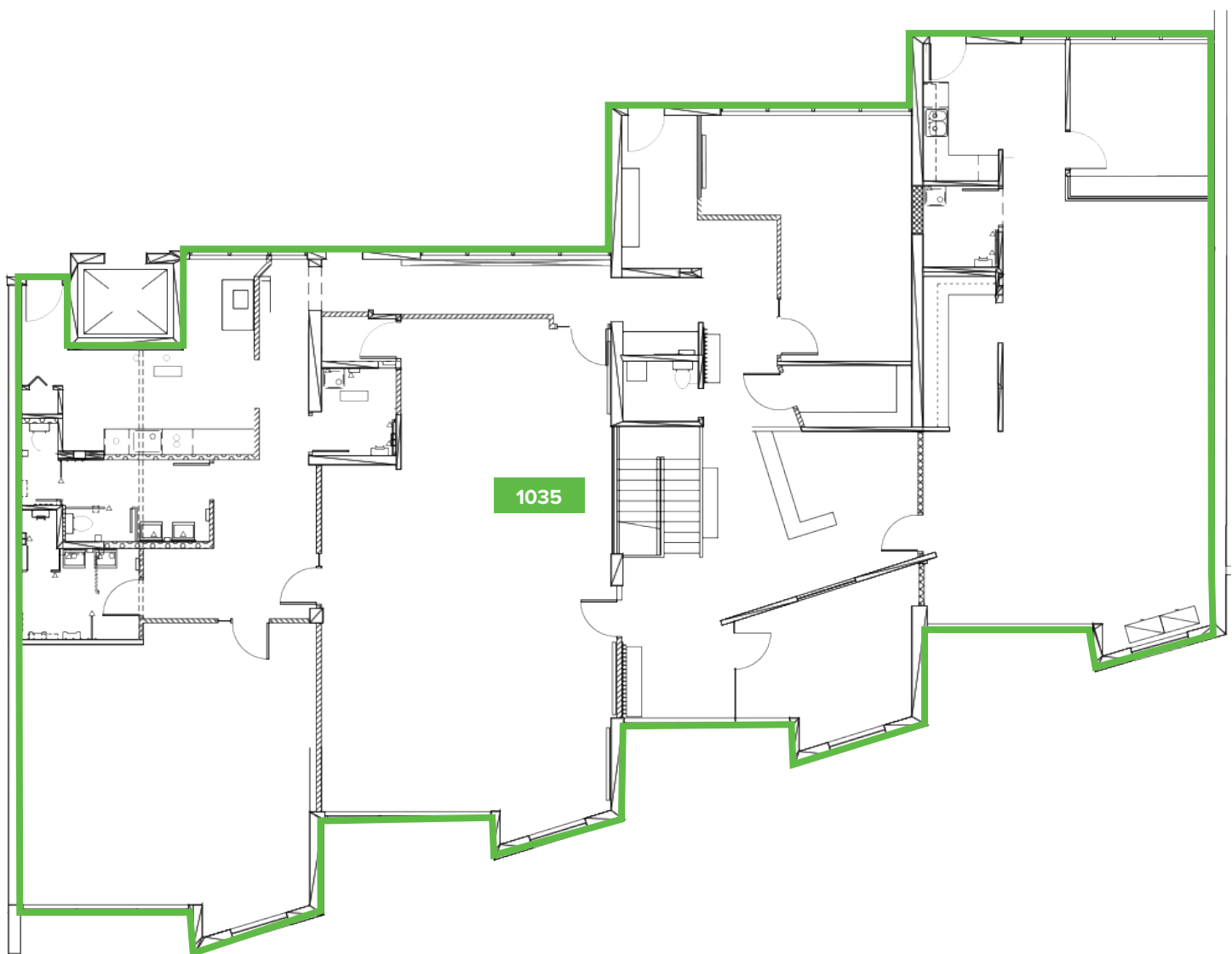


# Yaletown Mews

Vancouver, British Columbia

Suite 1035  
5,139 square feet



**MARK TREPP\***  
**JONES LANG LASALLE**  
P 604.998.6035  
mark.trepp@jll.com

**ANDREW ASTLES\***  
**JONES LANG LASALLE**  
P 604.998.6045  
andrew.astles@jll.com

[epicinvestmentservices.com](http://epicinvestmentservices.com)

\*Salesperson

All information contained herein is from sources deemed reliable; however, no representation or warranty is made to the accuracy thereof Epic Investment Services (BC) Inc., Brokerage.