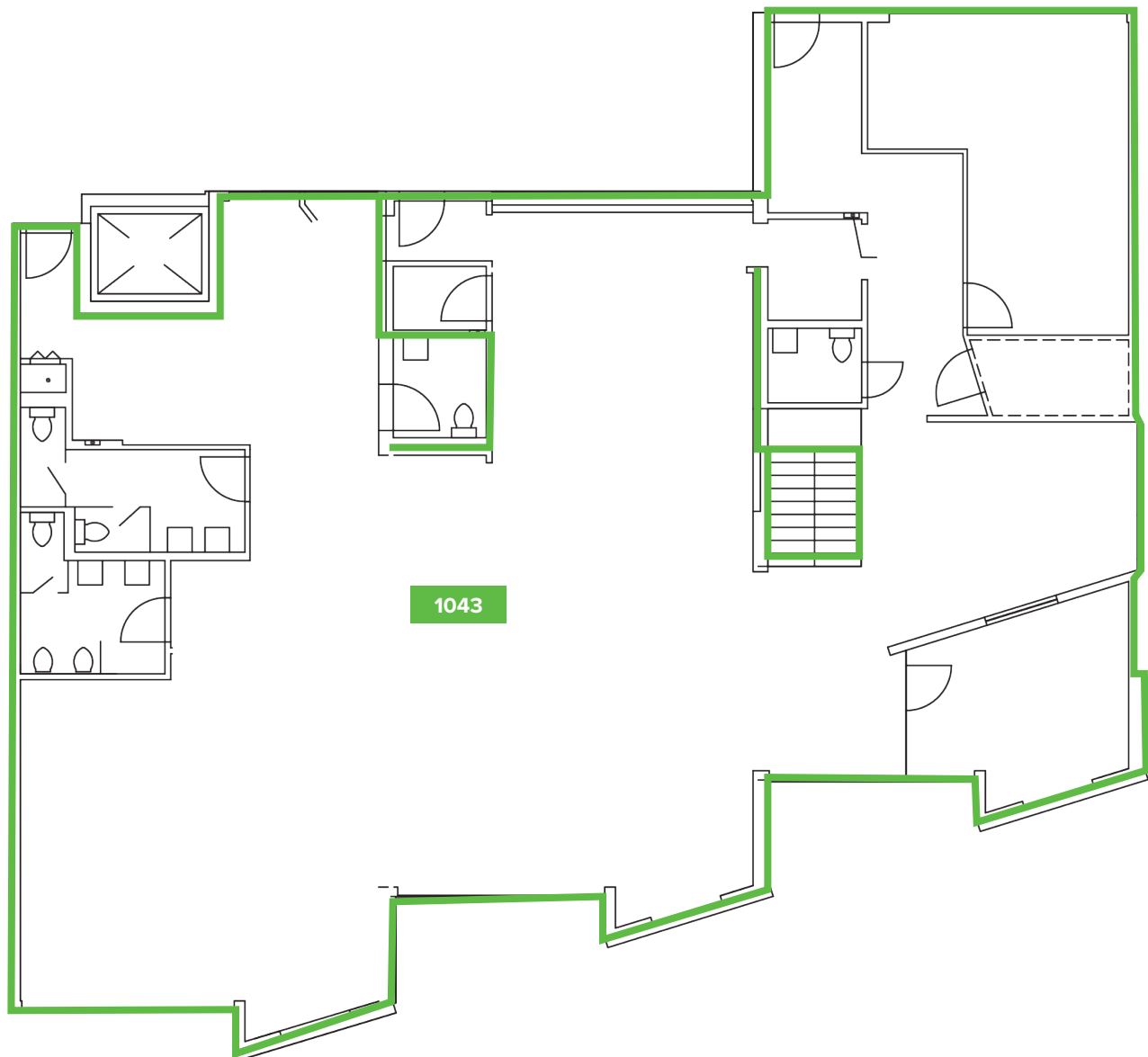


Yaletown Mews

Vancouver, British Columbia

Suite 1043
3,747 square feet



MARK TREPP*
JONES LANG LASALLE
P 604.998.6035
mark.trepp@jll.com

ANDREW ASTLES*
JONES LANG LASALLE
P 604.998.6045
andrew.astles@jll.com

epicinvestmentservices.com

*Salesperson

All information contained herein is from sources deemed reliable; however, no representation or warranty is made to the accuracy thereof Epic Investment Services (BC) Inc., Brokerage.