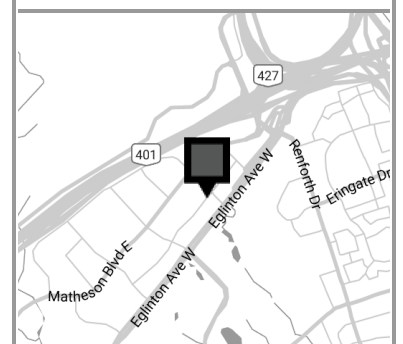




Version	Created: 10/24/2022
V2	Measured: 01/22/2019

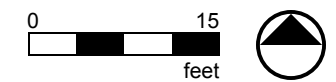
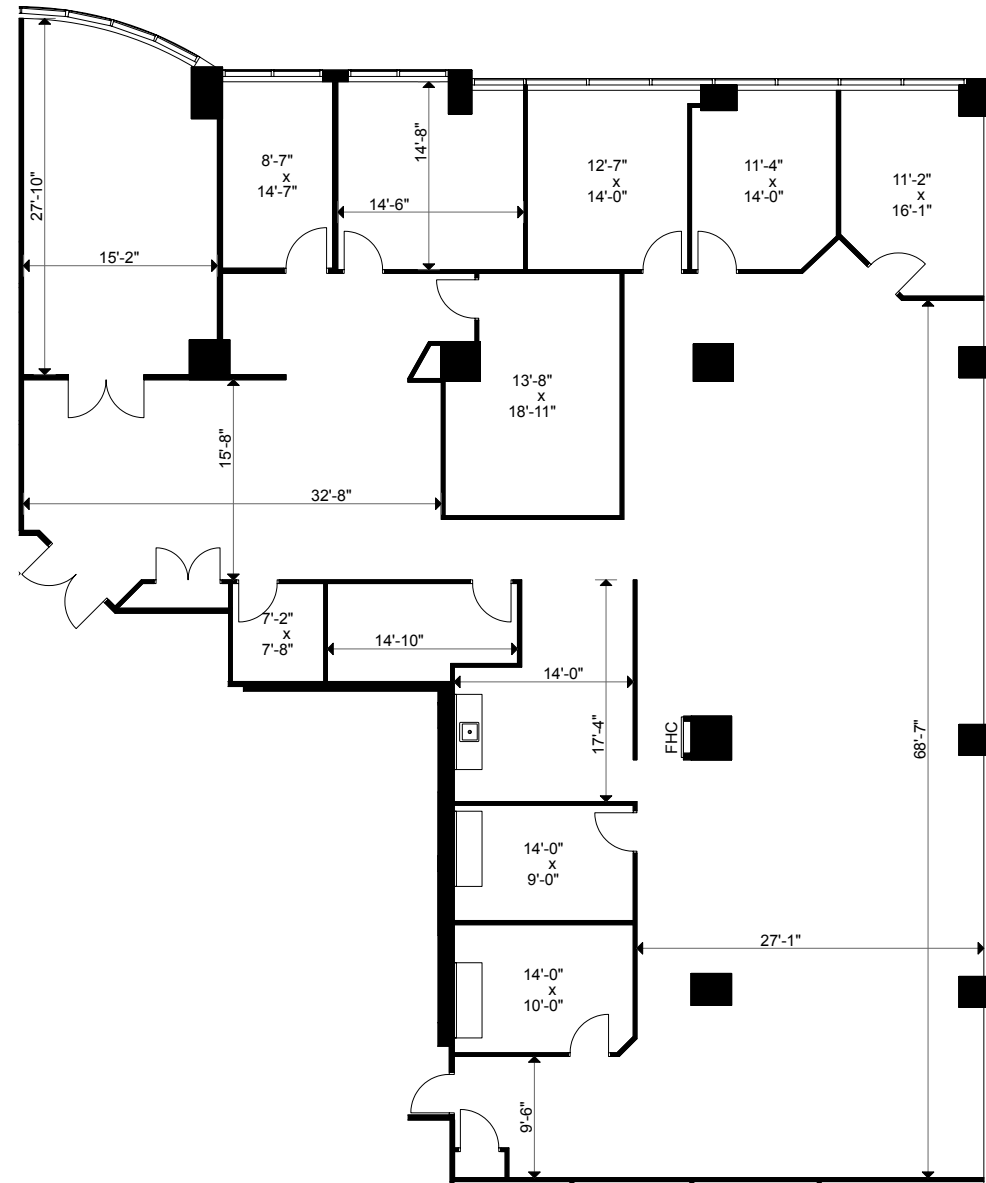
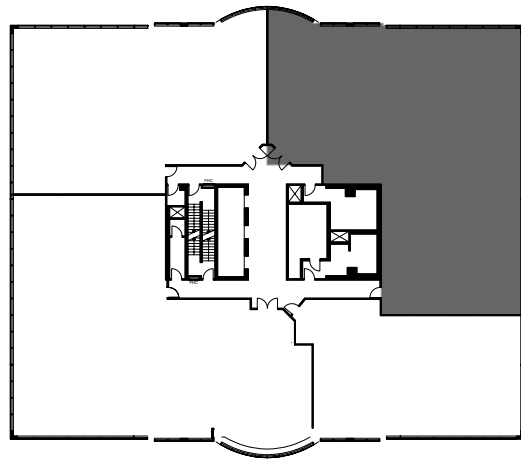
2680 Skymark Avenue
Mississauga, Ontario, Canada
Suite 400

Total Rentable Area: 6,305 sq ft
Please refer to corresponding
BOMA Office 1996 Area Chart:
2680skymark-b96-17a.pdf



This work product has been prepared by Extreme Measures Inc. pursuant to a contract with the Client for the sole benefit of and use by the Client. No third party may rely on this work product without the receipt of a reliance letter from Extreme Measures Inc.

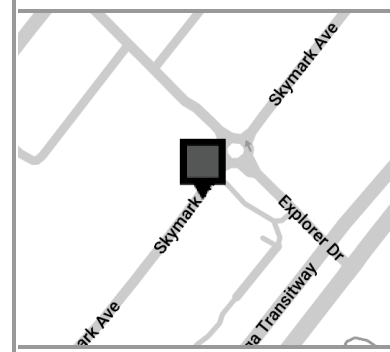
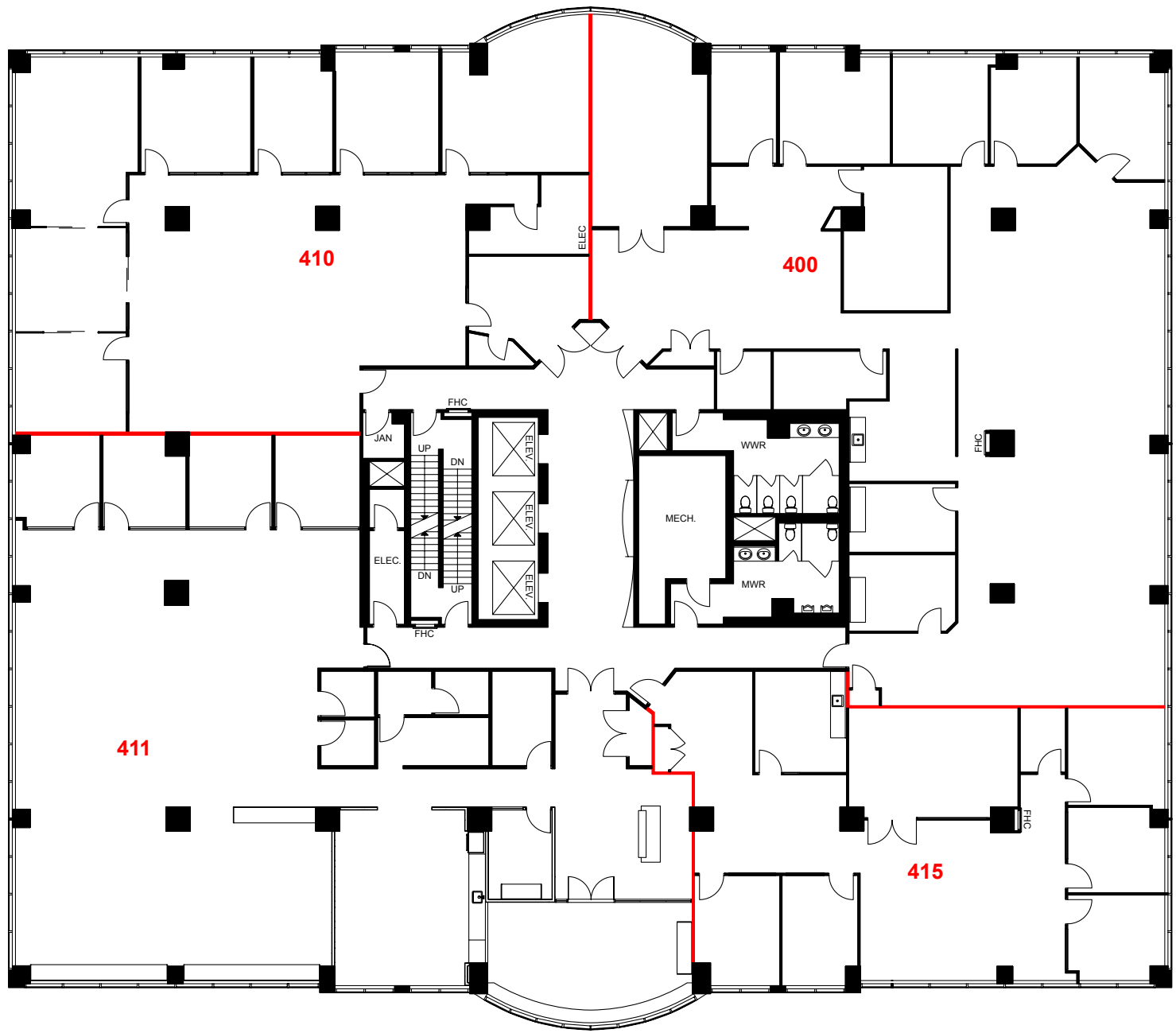
This work product or portions thereof relies upon information provided by the Client and/or from third parties introduced by the Client that has not been independently verified by Extreme Measures Inc. Extreme Measures Inc. is not liable for any errors, omissions or inaccuracies that may result from such information.





Version	Created: 08/25/2023
FP4A	Measured: 08/24/2023

2680 Skymark Avenue
Mississauga, Ontario, Canada
Floor 4



This work product has been prepared by Extreme Measures Inc. pursuant to a contract with the Client for the sole benefit of and use by the Client. No third party may rely on this work product without the receipt of a reliance letter from Extreme Measures Inc.

This work product or portions thereof relies upon information provided by the Client and/or from third parties introduced by the Client that has not been independently verified by Extreme Measures Inc. Extreme Measures Inc. is not liable for any errors, omissions or inaccuracies that may result from such information.

