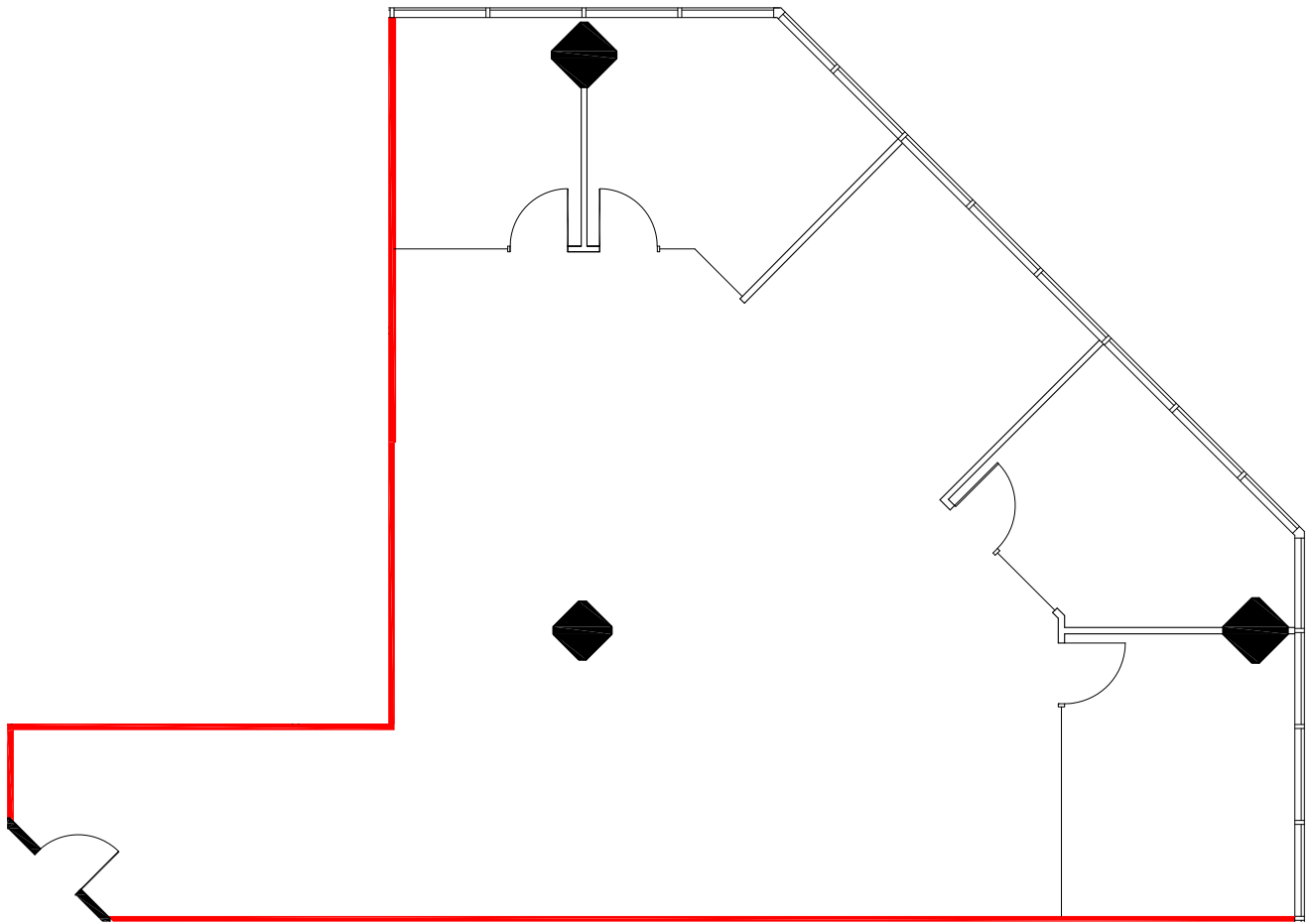


KEY PLAN



— DEMISING WALL



SUITE 404

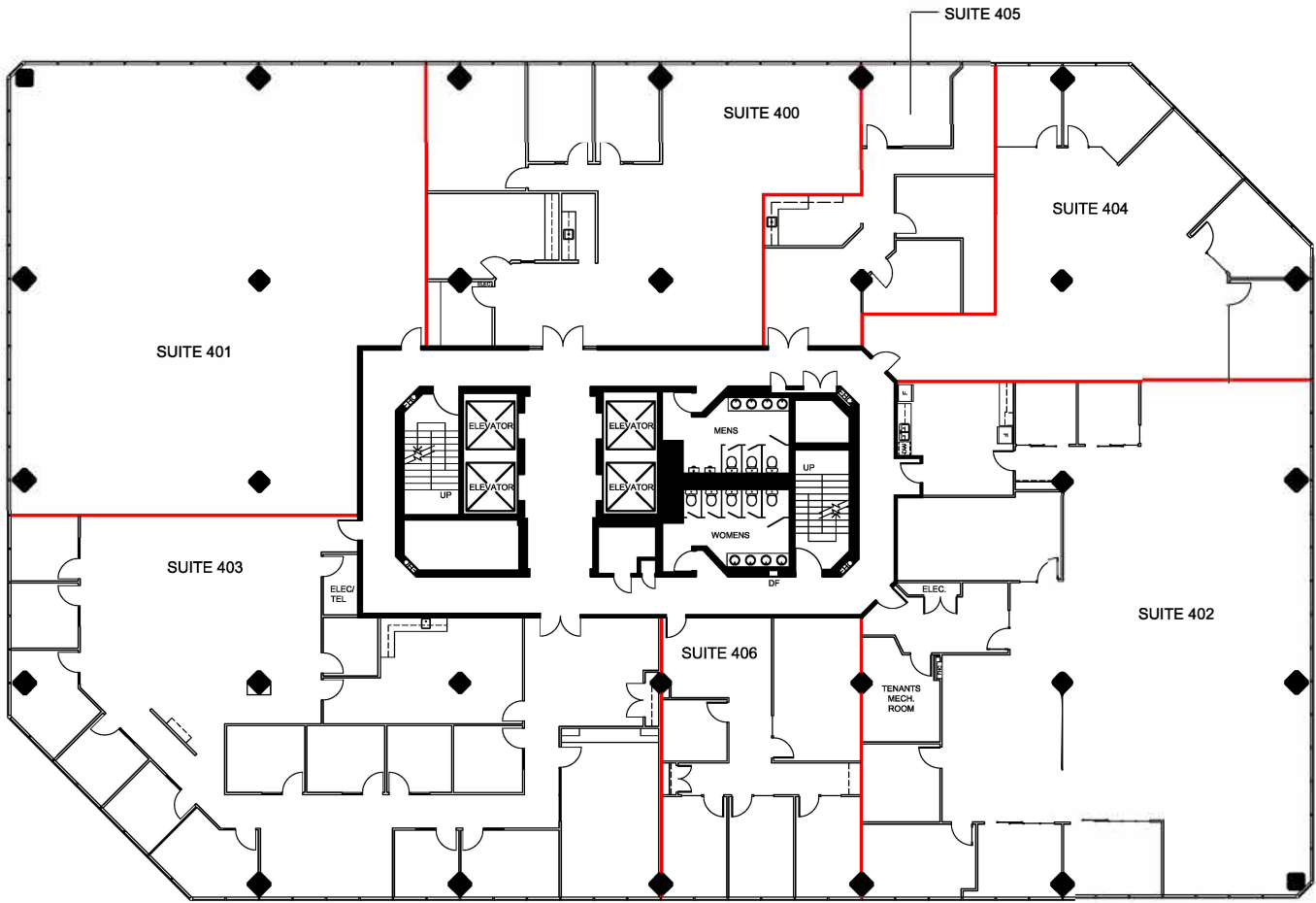
RENTABLE AREA = 2,485 SF

ABOVE INFORMATION ESTABLISHED ACCORDING
TO BOMA / ANSI Z65.1 1996



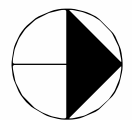
1500 Don Mills Road
Toronto, Ontario
Suite 404





NOTE: INTERIOR LAYOUT FOR SUITE 400 PROVIDED BY PROPERTY MANAGEMENT

— DEMISING WALL



1500 Don Mills Road
 Toronto, Ontario
 Fourth Floor - Area Summary