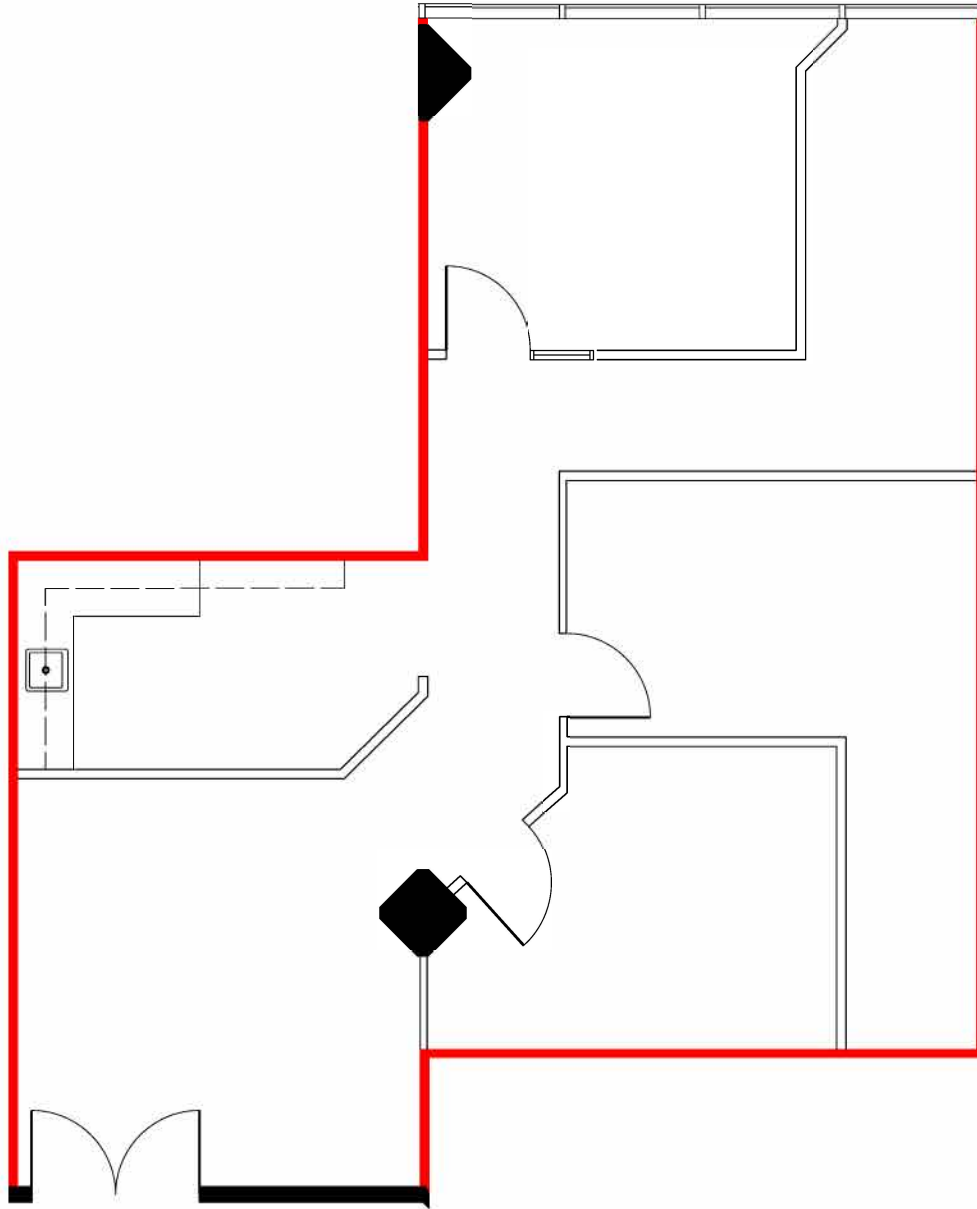


KEY PLAN



 DEMISING WALL



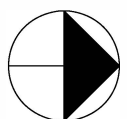
# SUITE 405

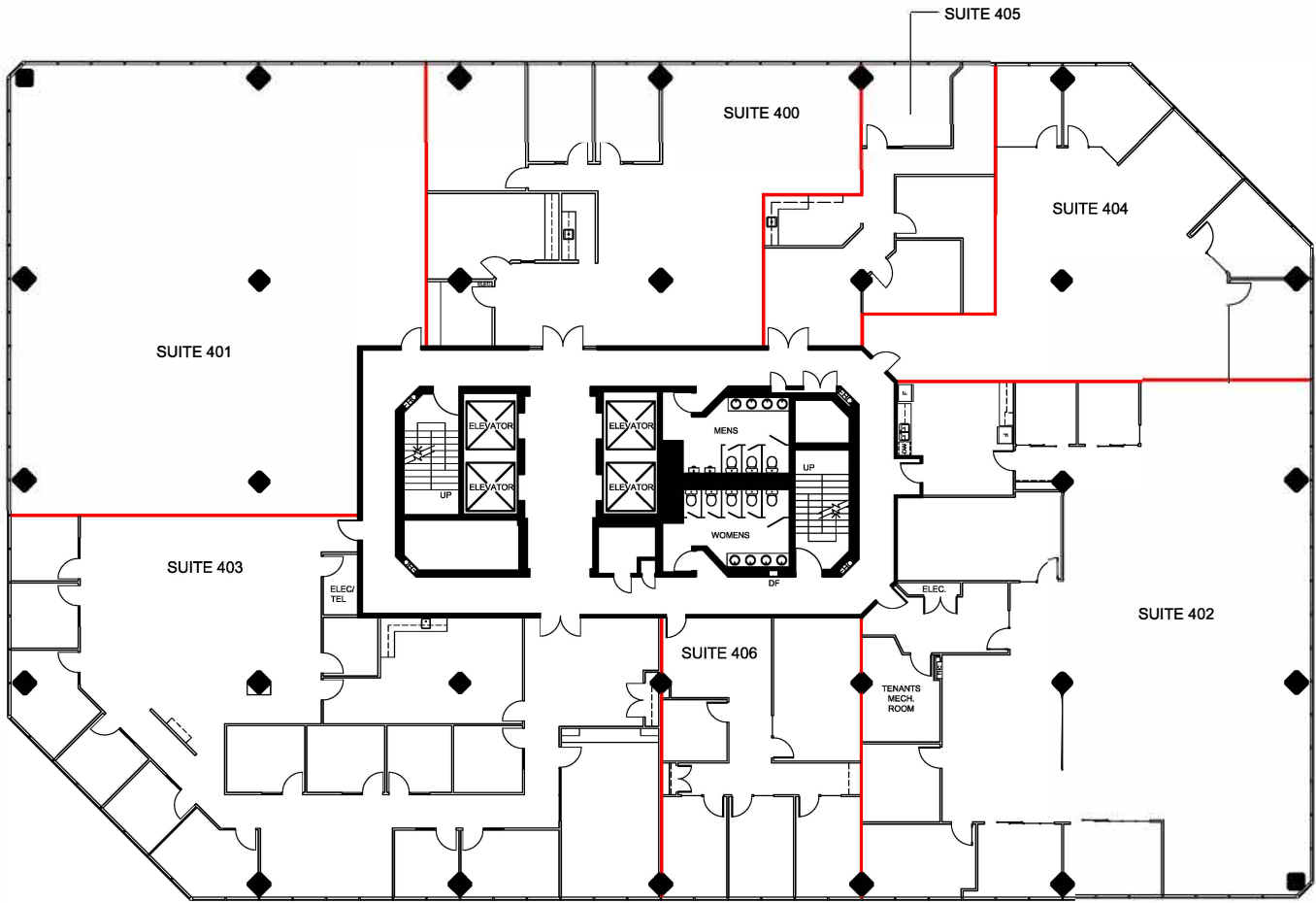
RENTABLE AREA = 1,298 SF

ABOVE INFORMATION ESTABLISHED ACCORDING  
TO BOMA / ANSI Z65.1 1996



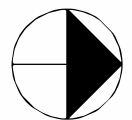
1500 Don Mills Road  
Toronto, Ontario  
Suite 405





NOTE: INTERIOR LAYOUT FOR SUITE 400 PROVIDED BY PROPERTY MANAGEMENT

— DEMISING WALL



1500 Don Mills Road  
 Toronto, Ontario  
 Fourth Floor - Area Summary