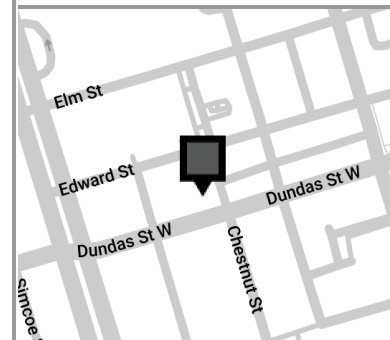




Version	Created: 05/19/2023
V1	Measured: N/A

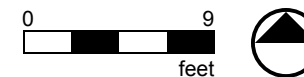
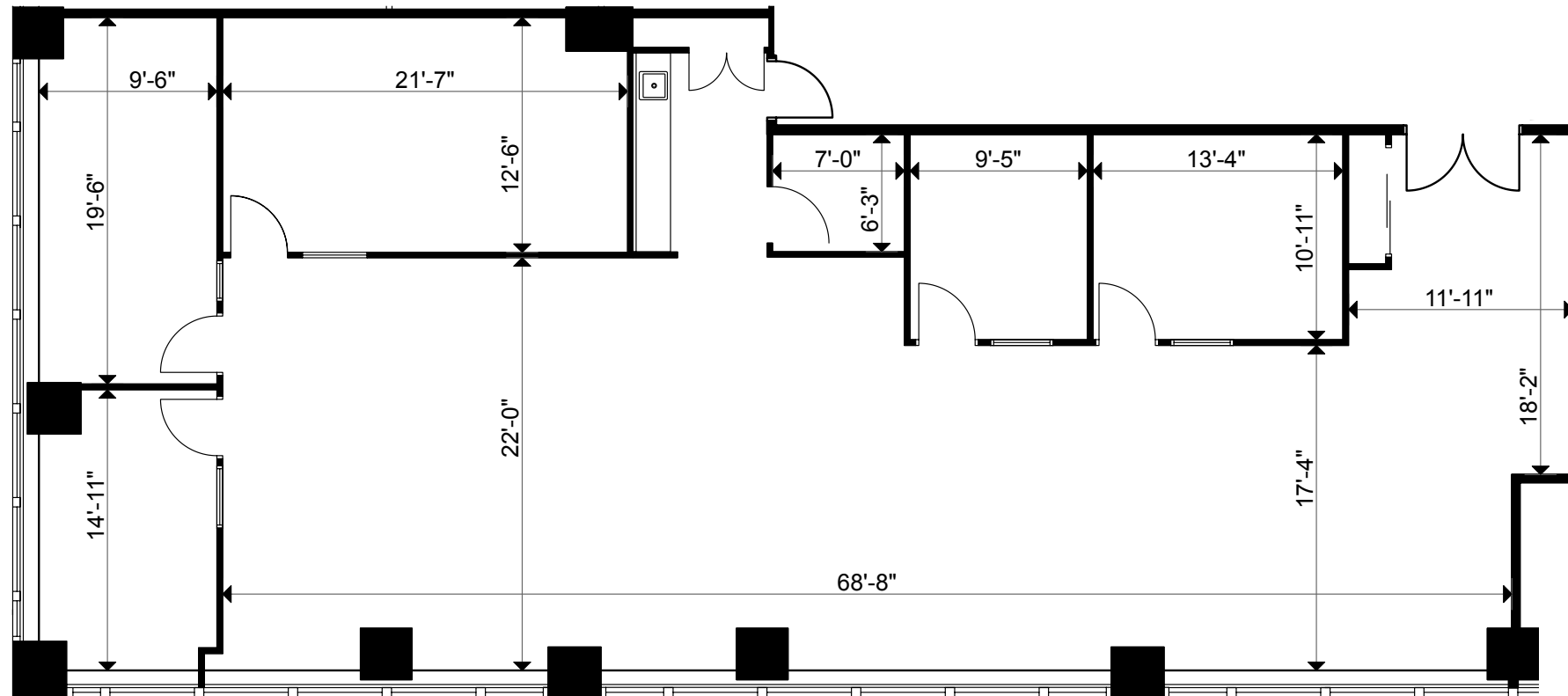
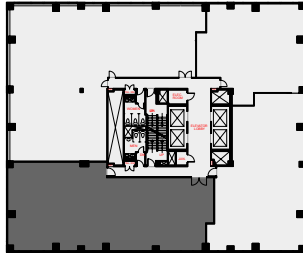
180 Dundas Street West
Toronto, Ontario, Canada
Suite 2605

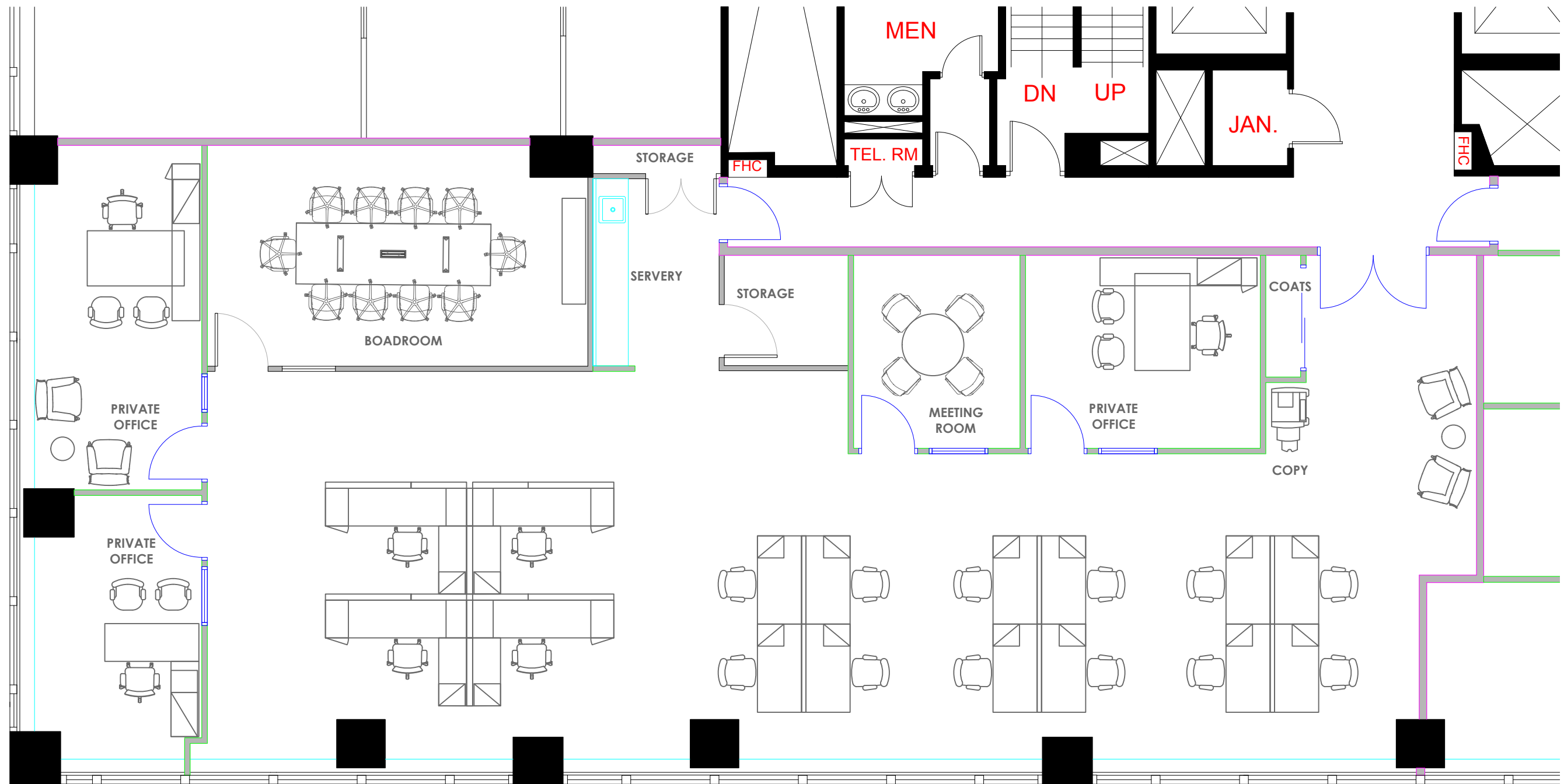
Rentable Area: 3,241 sq ft
*Please refer to corresponding
BOMA Office 2017 Method A Area
Chart:*
[180dundas-b17a-2b.pdf](#)



This work product has been prepared by Extreme Measures Inc. pursuant to a contract with the Client for the sole benefit of and use by the Client. No third party may rely on this work product without the receipt of a reliance letter from Extreme Measures Inc.

This work product or portions thereof relies upon information provided by the Client and/or from third parties introduced by the Client that has not been independently verified by Extreme Measures Inc. Extreme Measures Inc. is not liable for any errors, omissions or inaccuracies that may result from such information.





WRIGHT
INTERIOR DESIGN

86 RINGWOOD DRIVE SUITE 214
STOUFFVILLE, ON L4A 1C3
TEL 416.400.0046
www.wrightinteriordesign.ca

This drawing is the property of WRIGHT INTERIOR DESIGN and it is not to be reproduced in any format in part or whole without written permission.

This drawing is a feasibility plan only. It is not intended to be used for any purpose other than a feasibility plan (i.e not for permit or construction).

Modifications/revisions may be required to this layout in order to meet all local codes and applicable laws.

This layout has not been site verified for accuracy and therefore should not be considered an exact reproduction of the site.

ISSUED

DATE (D.M.Y)	No.	DESCRIPTION
15.04.2023	1	ISSUED FOR REVIEW

PROJECT



180 DUNDAS STREET, 26TH FLOOR
TORONTO, ONTARIO

SCALE NTS

PROJECT# 23-0XX

DATE APR.25 2023

DRAWN KB

CHECKED

DRAWING TITLE

**FEASIBILITY PLAN
SUITE 2605**

DRAWING NUMBER

ID-SP1

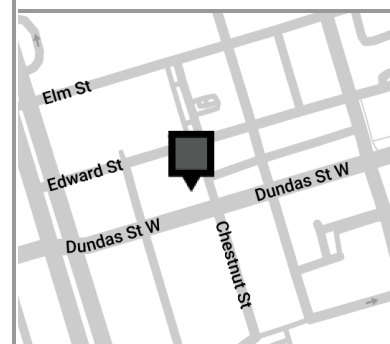
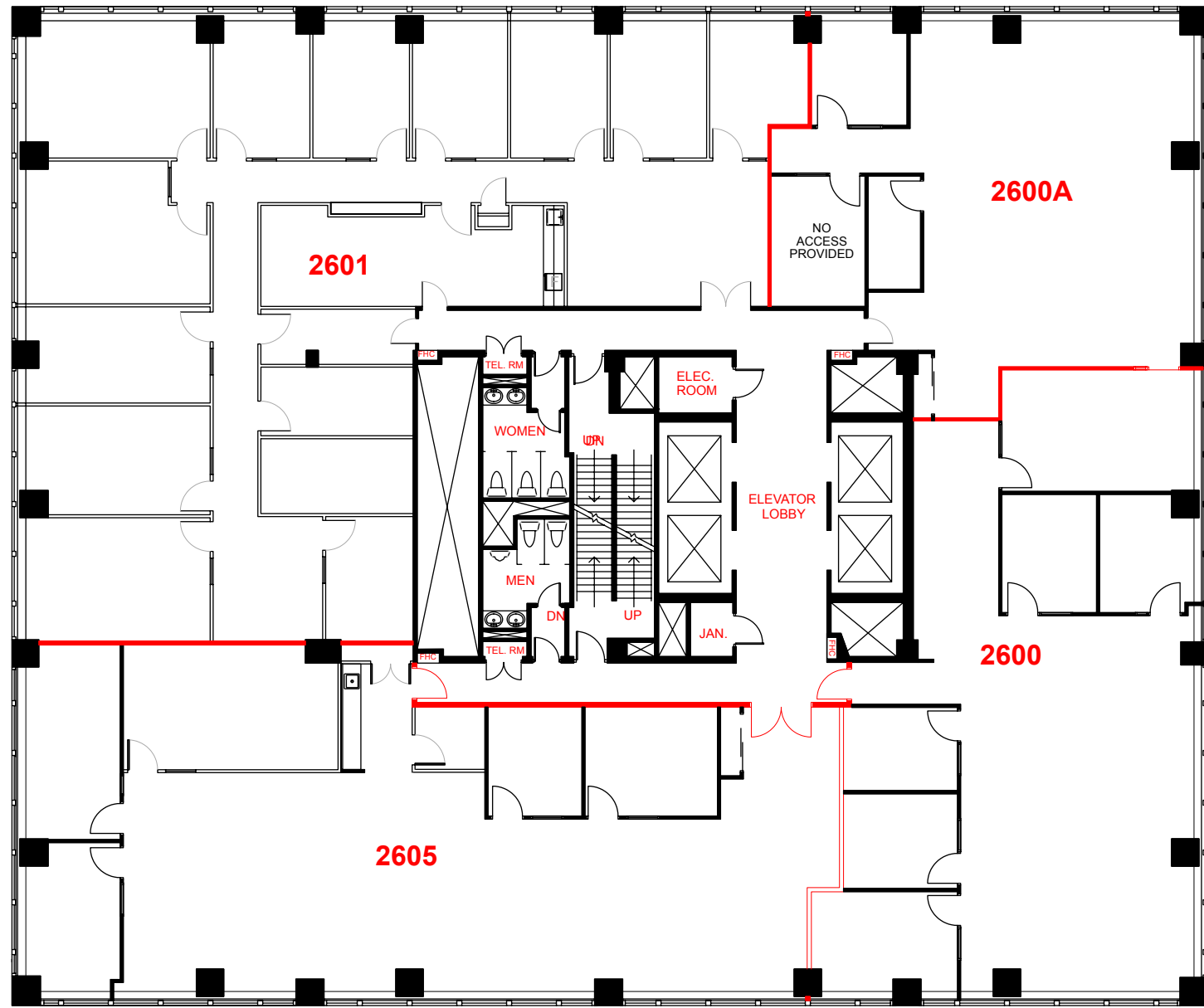
PROJECT NORTH





Version	Created: 09/02/2022
FP1A	Measured: N/A

180 Dundas Street West
Toronto, Ontario, Canada
Floor 26



This work product has been prepared by Extreme Measures Inc. pursuant to a contract with the Client for the sole benefit of and use by the Client. No third party may rely on this work product without the receipt of a reliance letter from Extreme Measures Inc.

This work product or portions thereof relies upon information provided by the Client and/or from third parties introduced by the Client that has not been independently verified by Extreme Measures Inc. Extreme Measures Inc. is not liable for any errors, omissions or inaccuracies that may result from such information.

