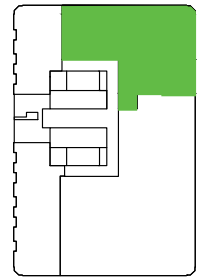
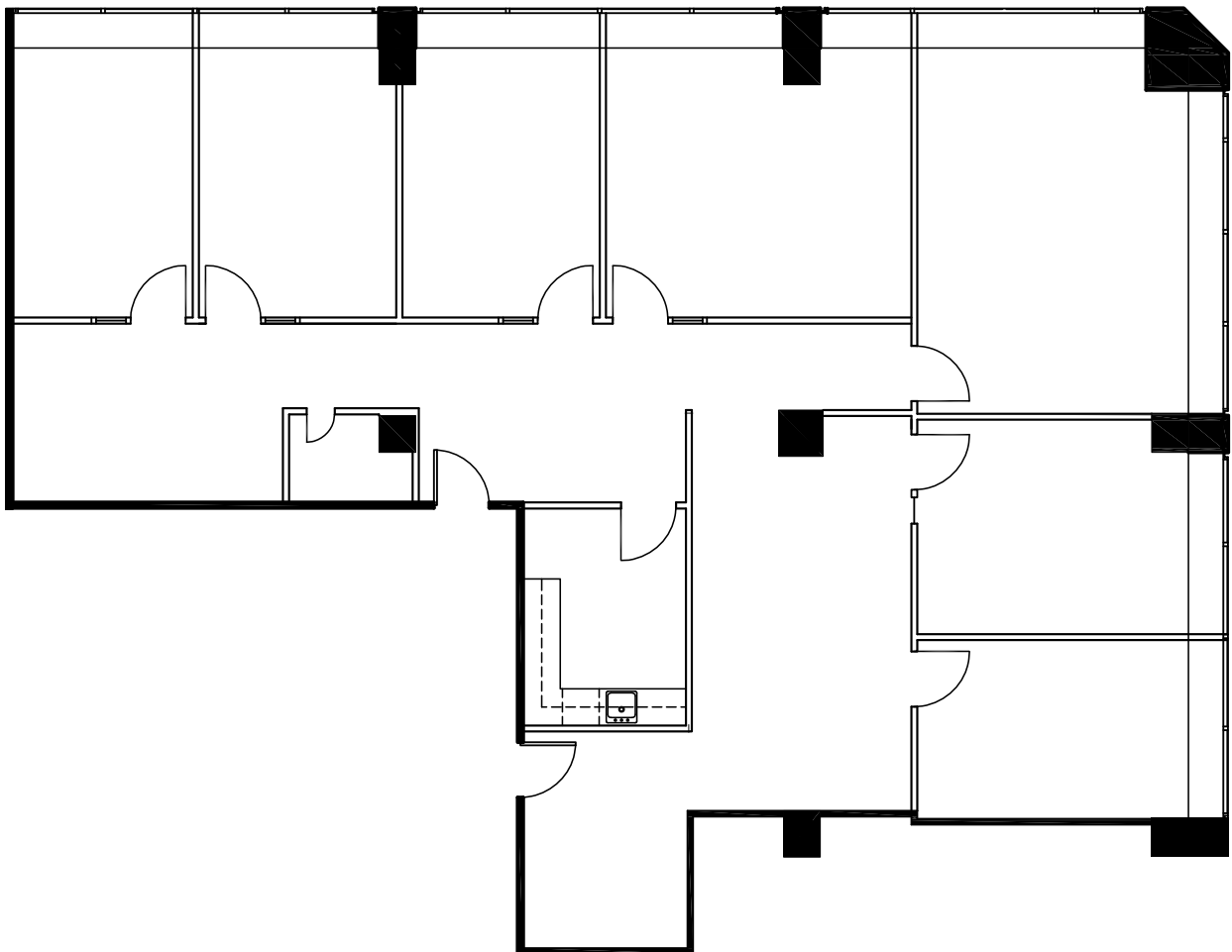


**141 ADELAIDE
STREET WEST
TORONTO**



KEY PLAN



SUITE	SQ. FT.	TYPE	AVAILABILITY	AVAILABLE SUITES
420	2,905	Office	Immediate	Corner suite built-out with six private offices, boardroom, servery and storage room. Feasibility floor plan available.



John Shields*
Vice President, Leasing
416.558.9700
jshields@epicinvestmentservices.com

Tim Murray*
Senior Director, Leasing
416.497.7033
tmurray@epicinvestmentservices.com