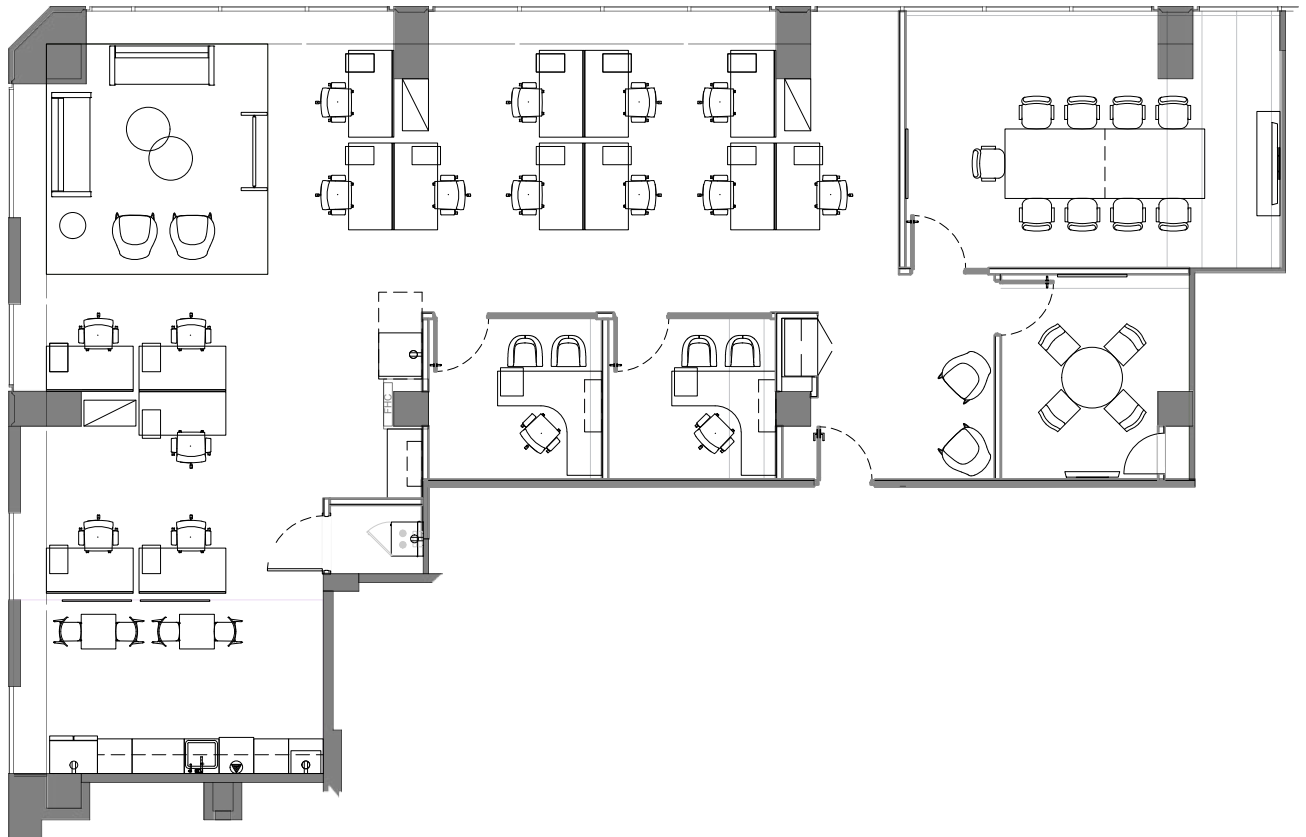


**141 ADELAIDE  
STREET WEST  
TORONTO**



| SUITE | SQ. FT. | TYPE   | AVAILABILITY | AVAILABLE SUITES   |
|-------|---------|--------|--------------|--|
| 603   | 2,609   | Office | Oct 1, 2023  | Corner model suite with 2 private offices, 2 meeting rooms, 1 boardroom and a servery with an open area. |



**John Shields\***  
Vice President, Leasing  
416.558.9700  
jshields@epicinvestmentservices.com

**Allison Wise\*\***  
Leasing Representative  
647.800.5616  
awise@epicinvestmentservices.com