

KEY PLAN

— DEMISING WALL



SUITE 202

RENTABLE AREA = 8,827 SF

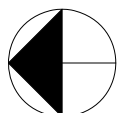
ABOVE INFORMATION ESTABLISHED ACCORDING
TO ANSI / BOMA Z65.1 1996

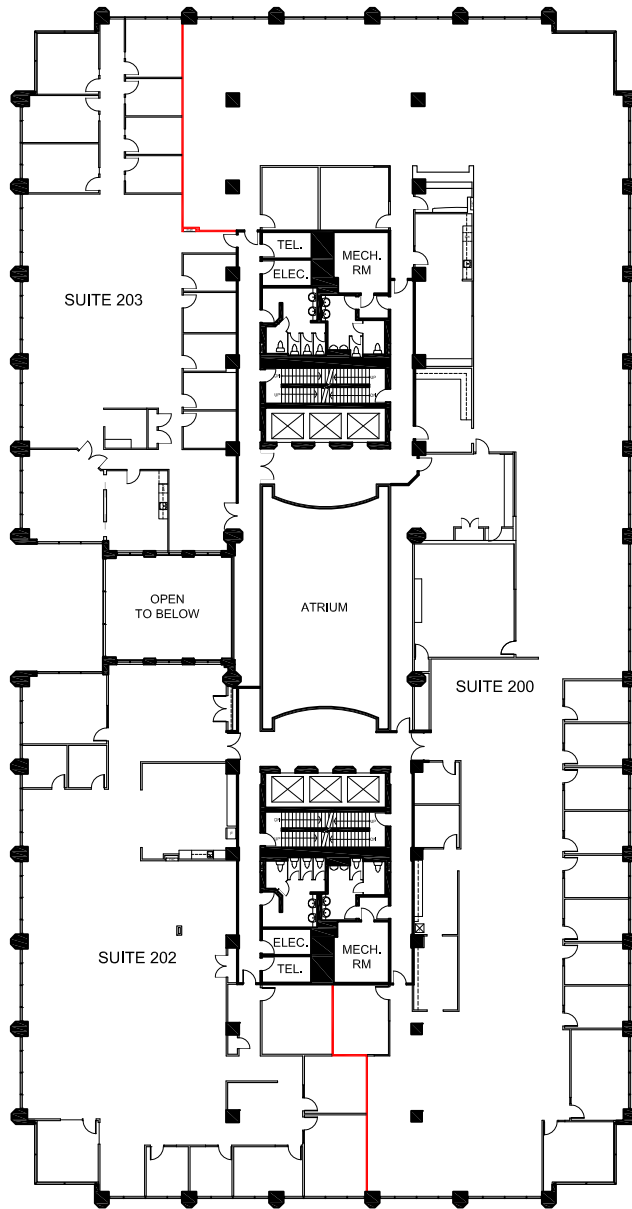
February 7, 2023

© 2023 Space Database Inc. All Rights Reserved



901 King Street West
Toronto, ON
Suite 202





— DEMISING WALL

0 10 50 FT.

AREA SUMMARY

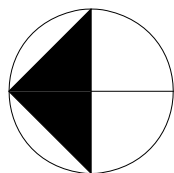
SUITE No.	USABLE AREA	RENTABLE AREA
200	16,801 S.F.	20,409 S.F.
202	7,267 S.F.	8,827 S.F.
203	5,308 S.F.	6,448 S.F.
TOTAL	29,377 S.F.	35,685 S.F.

R/U RATIO = 1.2148

ABOVE INFORMATION ESTABLISHED ACCORDING TO ANSI / BOMA Z65.1 1996



APPROXIMATE NORTH



PROJECT NAME

901 KING STREET WEST
TORONTO, ONTARIO

DRAWING NAME

SECOND FLOOR
AREA SUMMARY

SCALE
AS NOTED

DATE
February 07, 2023

DRAWING NO. R2