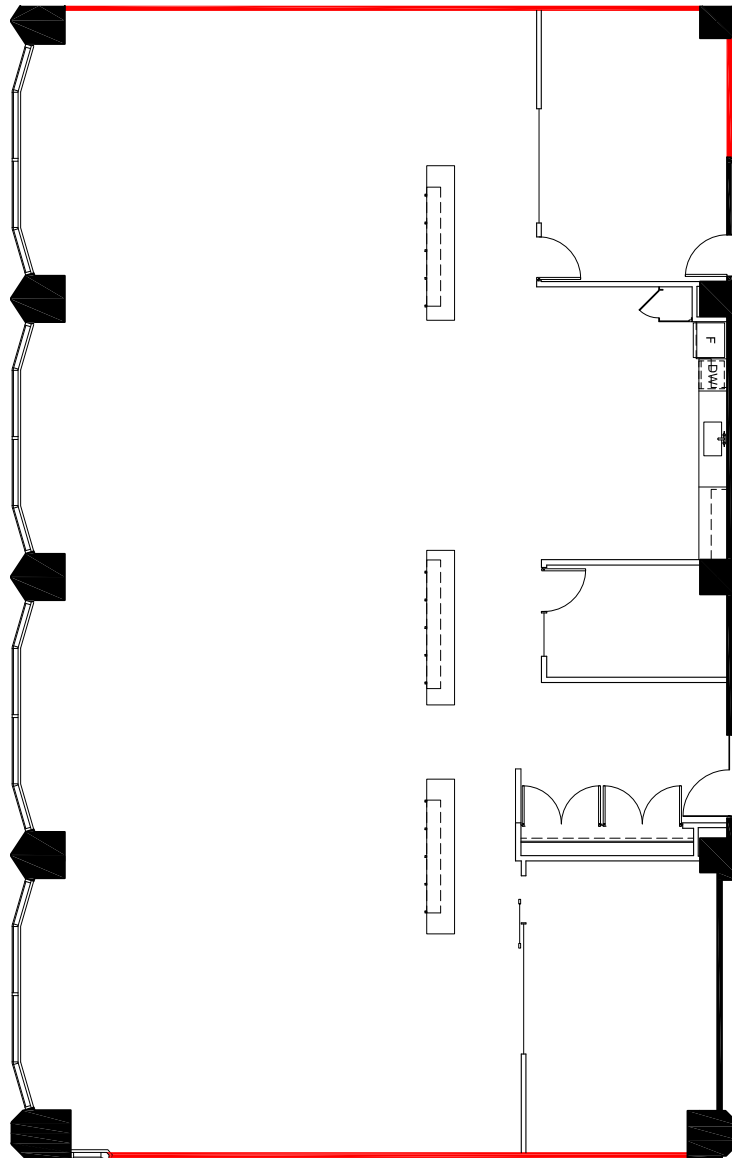


KEY PLAN



DEMISING WALL



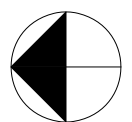
# SUITE 302

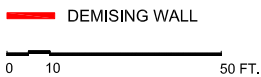
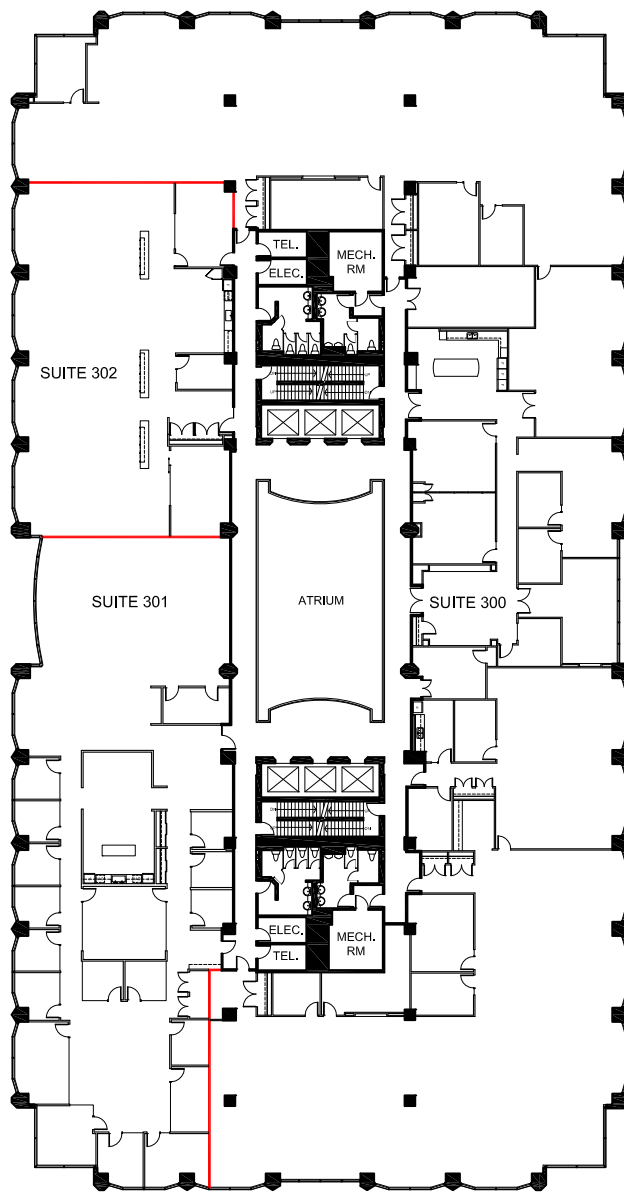
RENTABLE AREA = 5,128 SF

ABOVE INFORMATION ESTABLISHED ACCORDING TO ANSI / BOMA Z65.1 1996

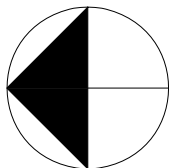


901 King Street West  
Toronto, ON  
Suite 302





APPROXIMATE NORTH



PROJECT NAME

901 KING STREET WEST  
TORONTO, ONTARIO

DRAWING NAME

THIRD FLOOR

SCALE  
AS NOTED

DATE  
MAY 9, 2023

DRAWING NO.