

KEY PLAN

DEMISING WALL



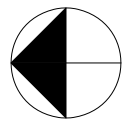
SUITE 301

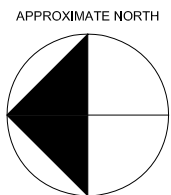
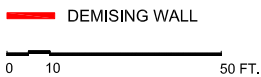
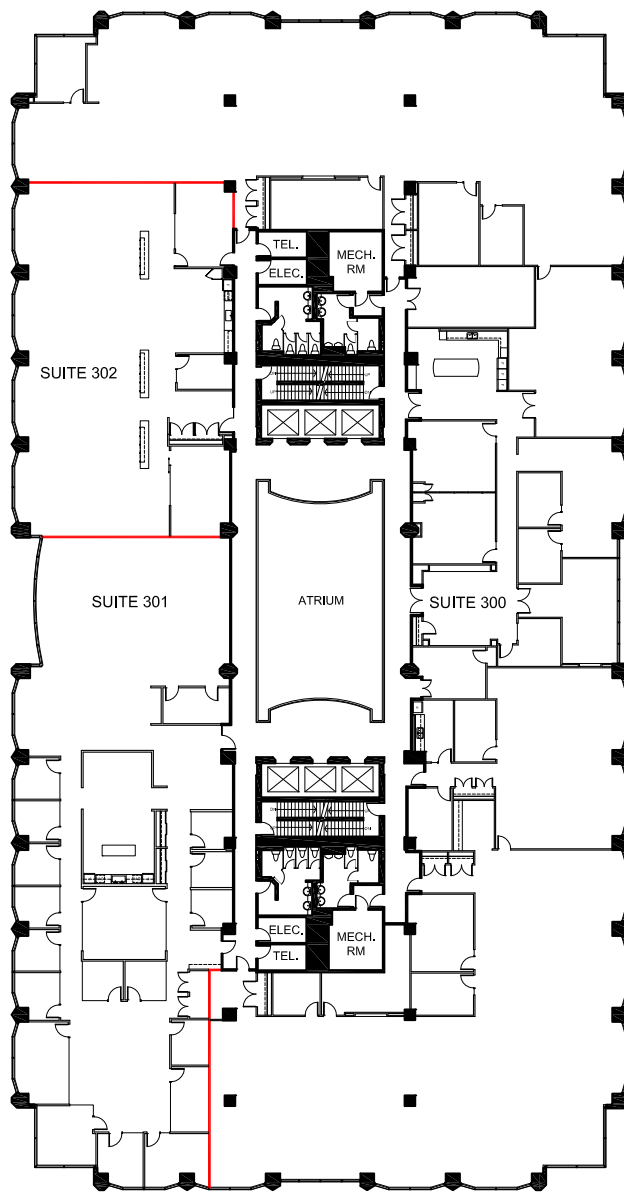
RENTABLE AREA = 8,672 SF

ABOVE INFORMATION ESTABLISHED ACCORDING TO ANSI / BOMA Z65.1 1996



901 King Street West
 Toronto, ON
 Suite 301





PROJECT NAME
**901 KING STREET WEST
 TORONTO, ONTARIO**

DRAWING NAME
THIRD FLOOR

SCALE
 AS NOTED

DATE
 MAY 9, 2023

DRAWING NO.