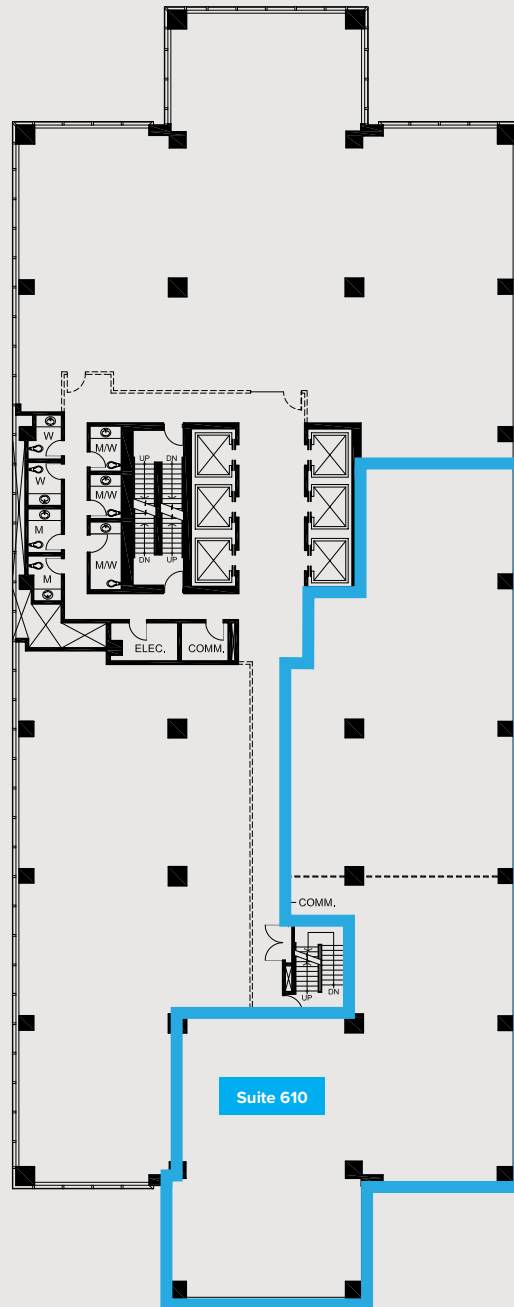


HSBC Place

10250 101 Street
Edmonton, Alberta



SUITE	SQ. FT.	TYPE	AVAILABILITY	COMMENTS
610	2,311	Office	Immediate	New show suite under construction. One office, board room, reception, kitchen and open area.

Cameron Martin
Director, Leasing
587.635.5335
cmartin@epicinvestmentservices.com
Epic Investment Services



epicinvestmentservices.com

All information contained herein is from sources deemed reliable; however, no representation or warranty is made to the accuracy thereof Epic Investment Services (Alberta) Inc.