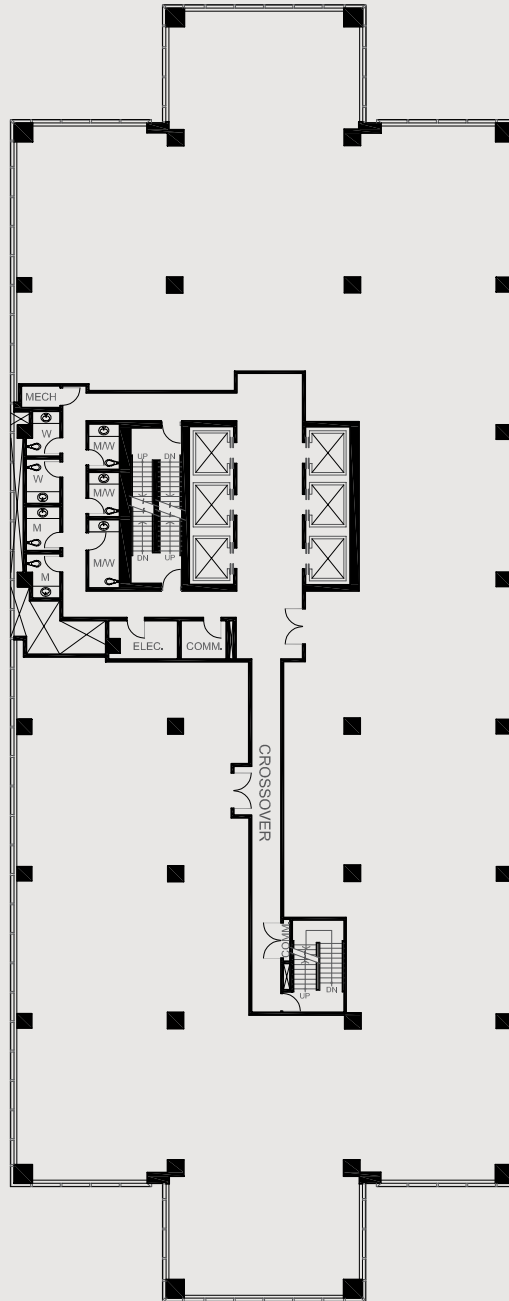


HSBC Place

10250 101 Street
Edmonton, Alberta



SUITE	SQ. FT.	TYPE	AVAILABILITY	COMMENTS
1700	16,015	Office	Immediate	Full floor (undeveloped). Base-building Condition, Turn-key opportunities available.

Cameron Martin
Director, Leasing
587.635.5335
cmartin@epicinvestmentservices.com

Epic Investment Services



epicinvestmentservices.com

All information contained herein is from sources deemed reliable; however, no representation or warranty is made to the accuracy thereof Epic Investment Services (Alberta) Inc.