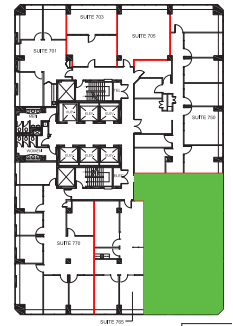
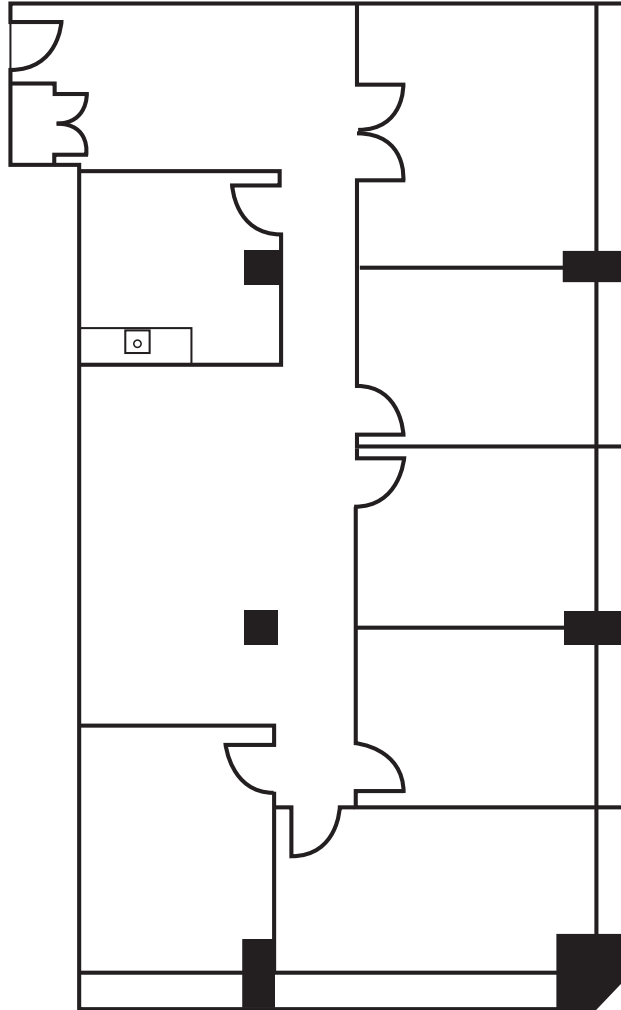


**141 ADELAIDE  
STREET WEST  
TORONTO**



KEY PLAN



SUITE	SQ. FT.	TYPE	AVAILABILITY	AVAILABLE SUITES
760	2,487	Office	Immediate	Corner suite built-out with two offices, meeting room, servery and open area.



**John Shields\***  
Vice President, Leasing  
416.558.9700  
jshields@epicinvestmentservices.com

**Alison Wise\*\***  
Leasing Representative  
647.800.5616  
awise@epicinvestmentservices.com