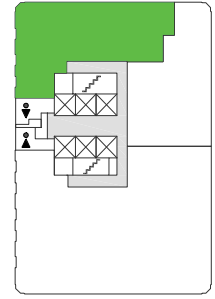


**141 ADELAIDE
STREET WEST
TORONTO**



KEY PLAN



WALL LEGEND

- DEMO WALL
- DEMISING WALL
- EXISTING WALL
- NEW WALL
- MEETING
- OPEN COLLAB.
- CAFE
- WORKSTATIONS
- OFFICE

SUITE 603
RENTABLE AREA = 2,611 SF

ABOVE INFORMATION ESTABLISHED ACCORDING
TO BOMA / ANSI Z65.1 1996

SUITE	SQ. FT.	TYPE	AVAILABILITY	AVAILABLE SUITES
603	2,609	Office	Immediate	Corner suite built-out with 6 private offices, boardroom, open workstation area, and servery. Feasibility floor plan available.



John Shields*
Vice President, Leasing
416.558.9700
jshields@epicinvestmentservices.com

Alison Wise**
Leasing Representative
647.800.5616
awise@epicinvestmentservices.com