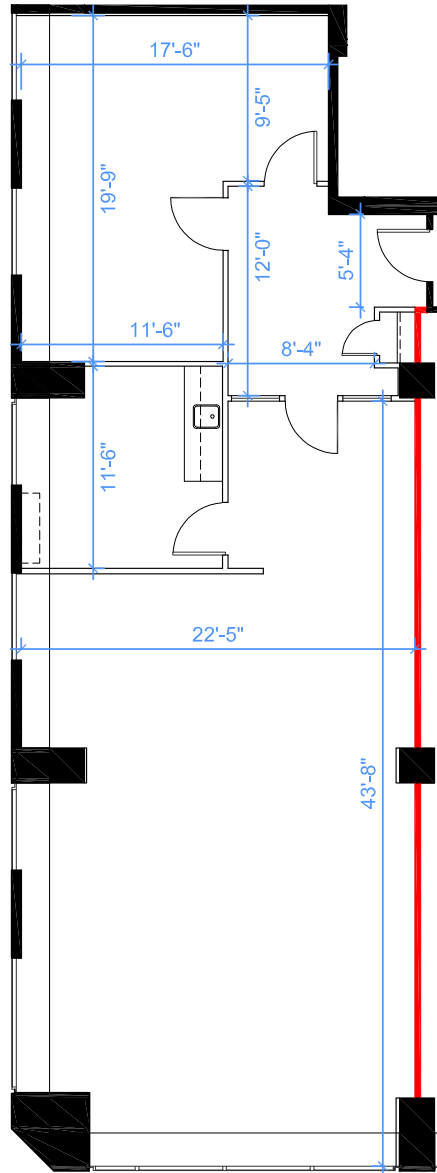
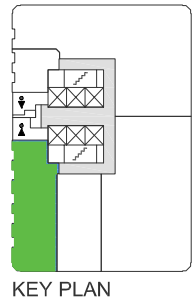


141 ADELAIDE
STREET WEST
TORONTO



— DEMISING WALL



SUITE 360

RENTABLE AREA = 1,645 SF

ABOVE INFORMATION ESTABLISHED ACCORDING
TO BOMA / ANSI Z65.1 1996

SUITE	SQ. FT.	TYPE	AVAILABILITY	AVAILABLE SUITES
360	1,645	Office	Immediate	Corner suite built-out with open workstation area, large meeting room and servery.



John Shields*
Vice President, Leasing
416.558.9700
jshields@epicinvestmentservices.com

Alison Wise**
Leasing Representative
647.800.5616
awise@epicinvestmentservices.com