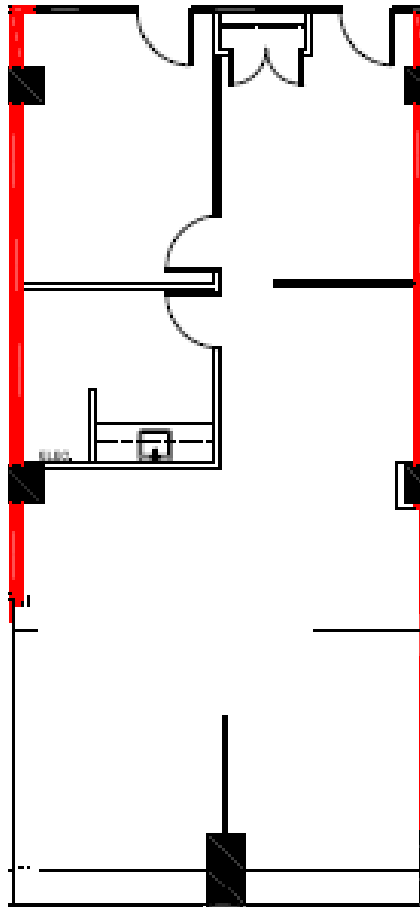
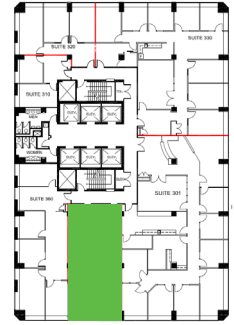


**141 ADELAIDE
STREET WEST
TORONTO**



 DEMISING WALL



SUITE	SQ. FT.	TYPE	AVAILABILITY	AVAILABLE SUITES
340	1,281	Office	Specified	Built Out Space



John Shields*
Vice President, Leasing
416.558.9700
jshields@epicinvestmentservices.com

Alison Wise**
Leasing Representative
647.800.5616
awise@epicinvestmentservices.com