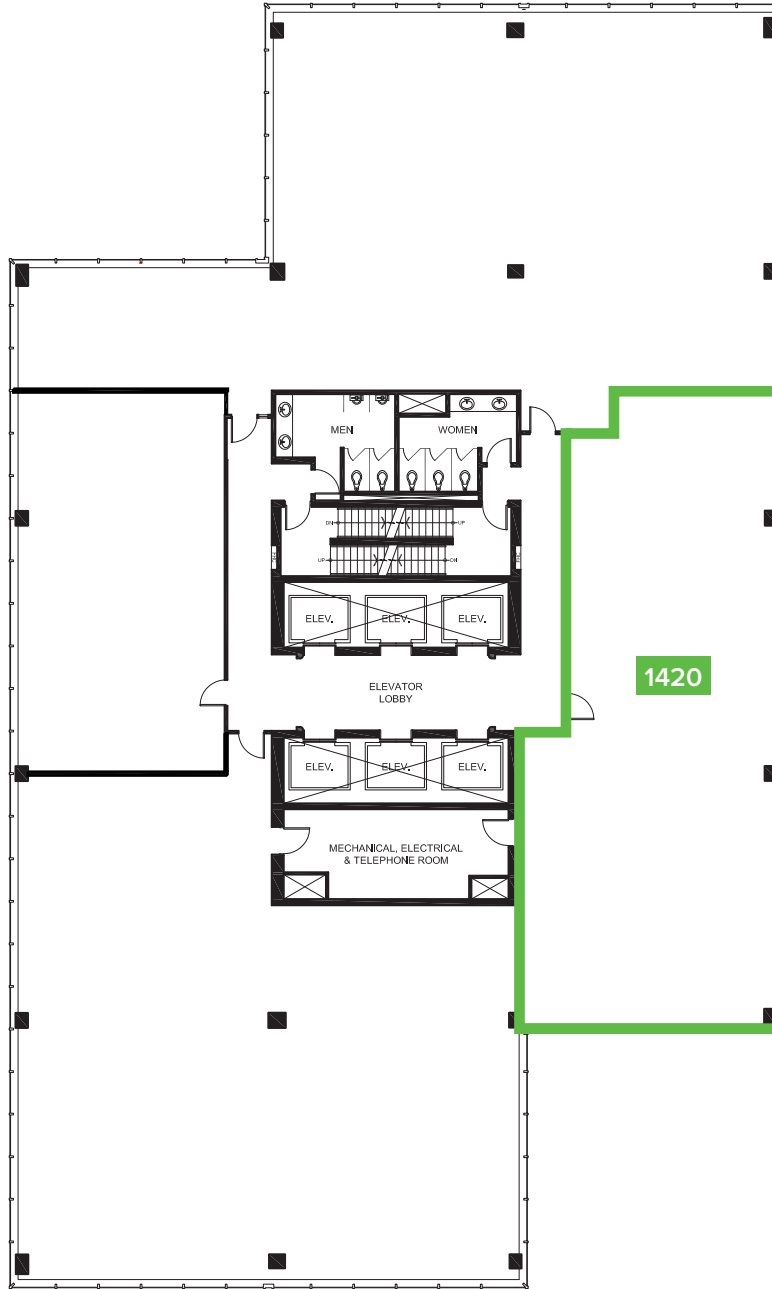




10130 103 STREET CENTRE  
EDMONTON, ALBERTA



SUITE	SQ. FT.	TYPE	AVAILABILITY	AVAILABLE SUITES
1420	2,352	Office	Immediate	Base-Building Condition, Turn-key opportunities available.



CAMERON MARTIN

587-635-5335

[cmartin@epicinvestmentservices.com](mailto:cmartin@epicinvestmentservices.com)

