

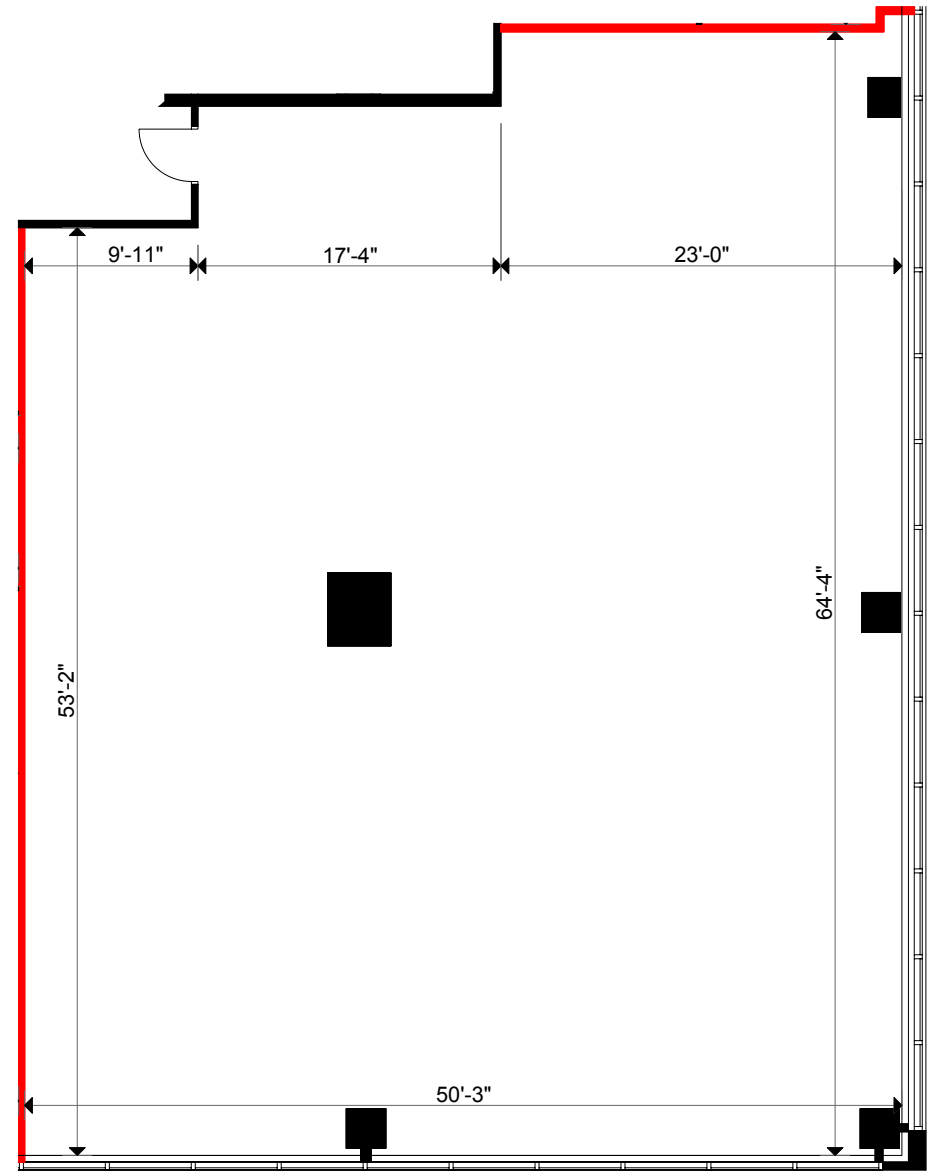
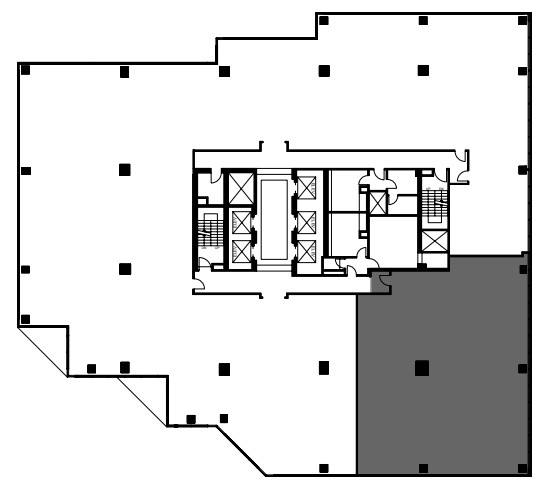
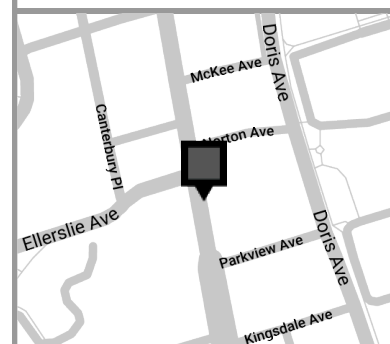


Version	Created: 04/09/2019
<b>V2</b>	Measured: 04/03/2019

Yonge-Norton Centre  
5255 Yonge Street  
Toronto, Ontario, Canada

**Suite 410**

Rentable Area:  
4,021 sq ft  
*Please refer to corresponding  
BOMA Office 1996 Area Chart:  
5255yonge-b96-9a.pdf*



This work product has been prepared by Extreme Measures Inc. pursuant to a contract with the Client for the sole benefit of and use by the Client. No third party may rely on this work product without the receipt of a reliance letter from Extreme Measures Inc.

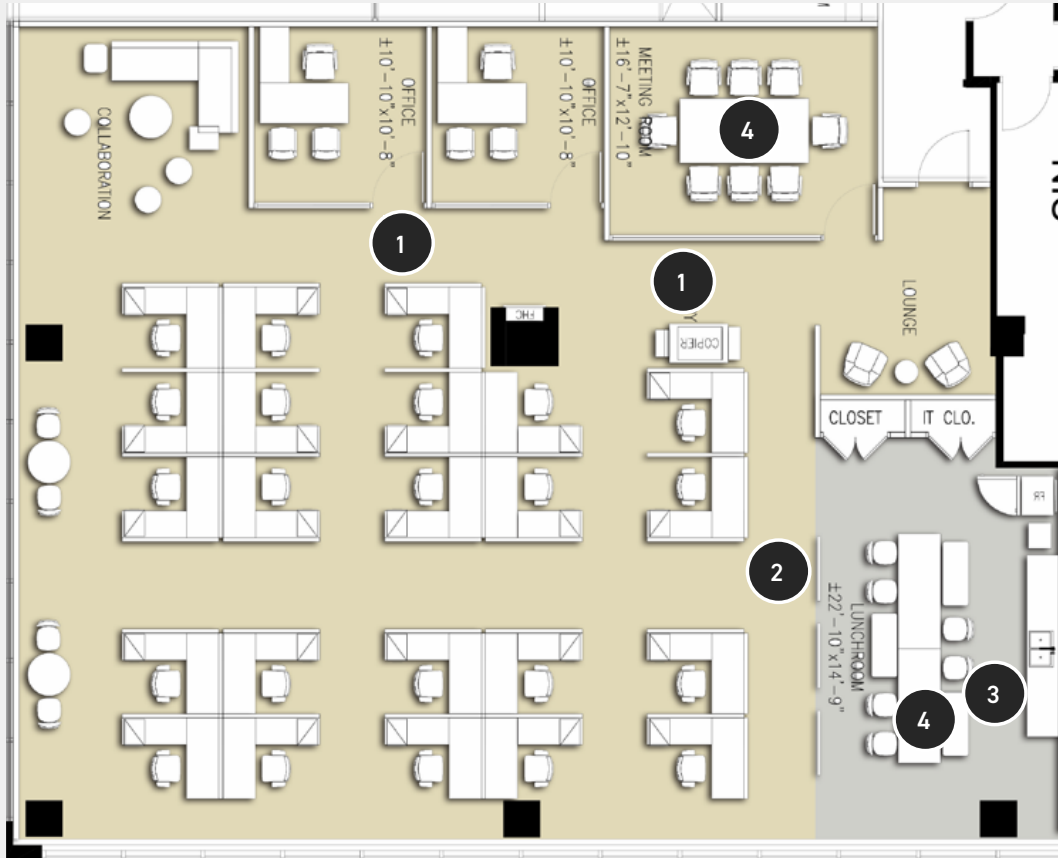
This work product or portions thereof relies upon information provided by the Client and/or from third parties introduced by the Client that has not been independently verified by Extreme Measures Inc. Extreme Measures Inc. is not liable for any errors, omissions or inaccuracies that may result from such information.

# 5255 YONGE ST

MODEL SUITE : SUITE 410 : 4,021 SF

FOR LEASING INQUIRIES:

Stefan Teague\*  
416.278.0015  
steague@crp-cpmi.com



1. New office fronts black frame with glass doors
2. Felt screens
3. Built in millwork counters
4. Accent lighting



CROWN

© 2021 CPMI Realty Inc. Location, buildout and features are subject to change without notice. Renderings are artist's concept and are subject to change. All dimensions are approximate and actual usable area may differ from that stated herein. \*Broker \*\*Sales Representative E.&O.E.