

# STARRETT LEHIGH

601 WEST 26TH STREET, NEW YORK, NY

**SUITE 400**

**98,843 RSF**

## AVAILABLE

Immediate

## LAYOUT/CONDITION

Existing Condition

Fully-Furnished

## VIEWS

Hudson River Exposure

## OTHER

12'8" ceiling height to slab

Proximity to passenger  
elevator & freight elevator

Space can be divisible by  
59,140 RSF & 39,703 RSF

## TRANSPORTATION

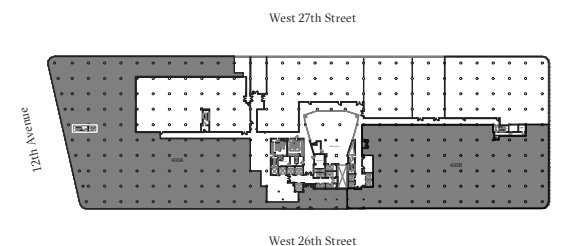
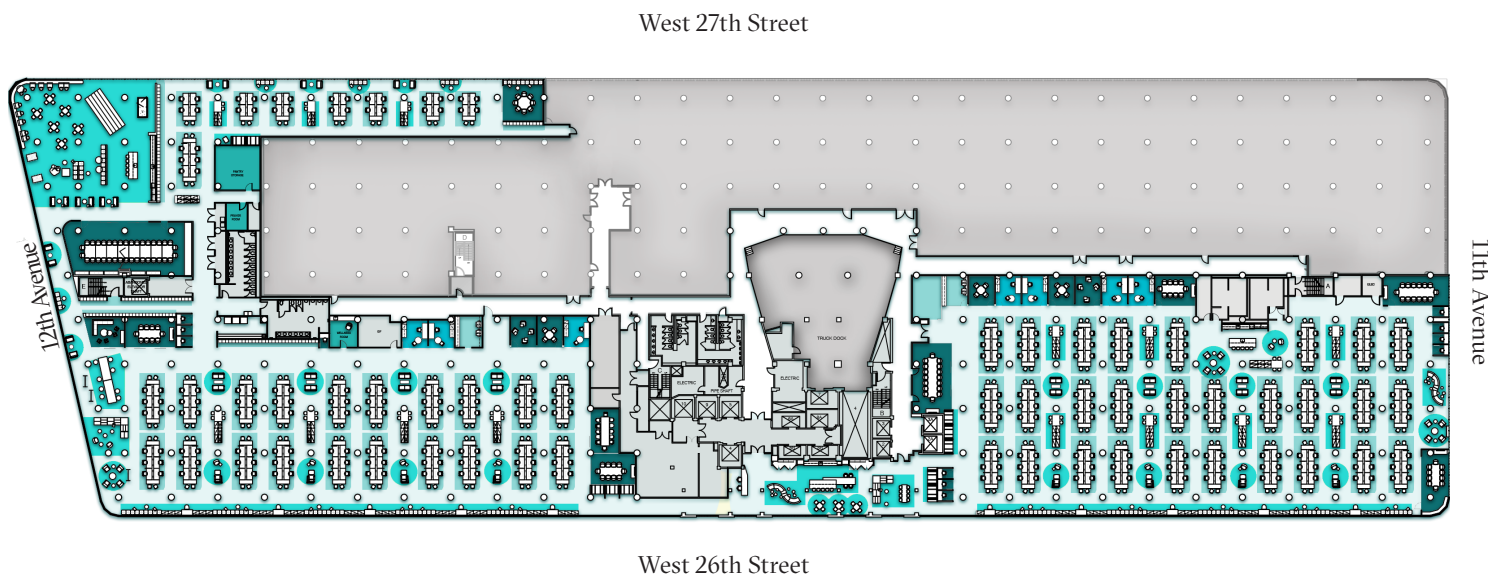
A C E 7

citi bike

M23

## PROPERTY FEATURES

- Landmark property located in the heart of Chelsea
- Expansive Hudson River and city views
- Modernized on-site fitness center offering training sessions
- Nationally celebrated food hall operator
- Dynamic multimedia event space
- Urban rooftop garden and beekeeping program
- RxWell platform offering best in-class comprehensive health practices



SCALE: N.T.S.

FOR LEASING INQUIRES & TO SCHEDULE A TOUR, CONTACT DENISE RODRIGUEZ | [DENISE.RODRIGUEZ@RXRREALTY.COM](mailto:DENISE.RODRIGUEZ@RXRREALTY.COM) | 212-924-3880

RXR