

# west

901 KING ST W

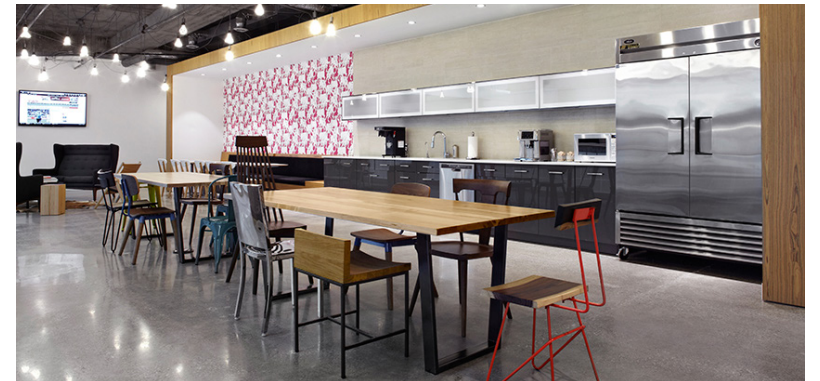
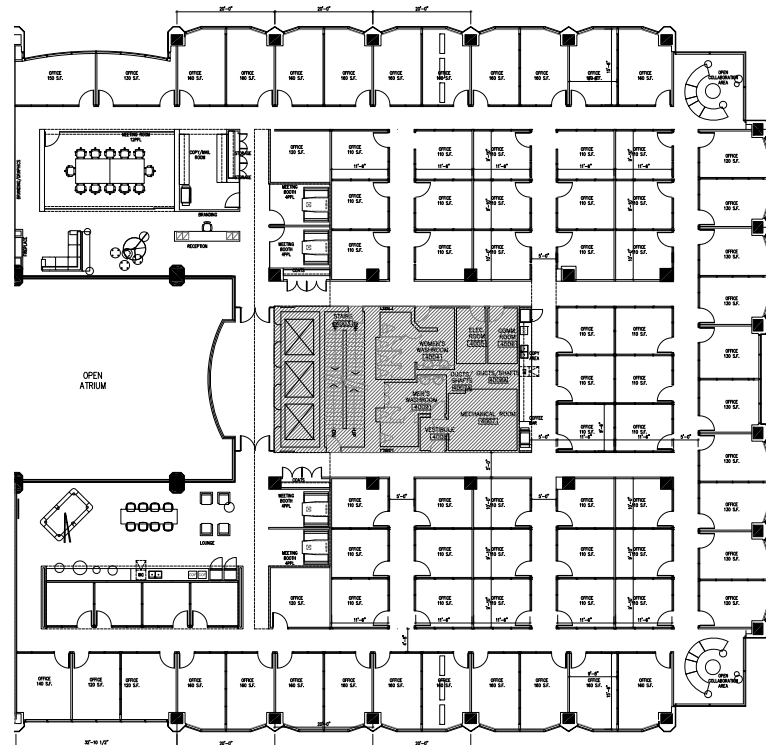
## Floor Plans

**Suite** 400

**Size** 20,396 sq. ft.

**Available** Can be made available in 90 days

**Comments** Heavily built-out space with unique design features and high-end finishes throughout. Layout consists of inviting reception/waiting areas, private offices, collaborative work spaces and impressive kitchen great perfect for a break, socializing or hosting events.



## Get In Touch!

**Brendan Sullivan\***  
Senior Vice President  
+1 (416) 576 3335  
brendan.sullivan@cbre.com

**Michael Spence\***  
Vice President  
+1 (416) 815 2379  
michael.spence@cbre.com

**Myah Ollek**  
Sales Representative  
+1 (416) 815 2353  
myah.ollek@cbre.com