



2630 + 2680

SKY MARK

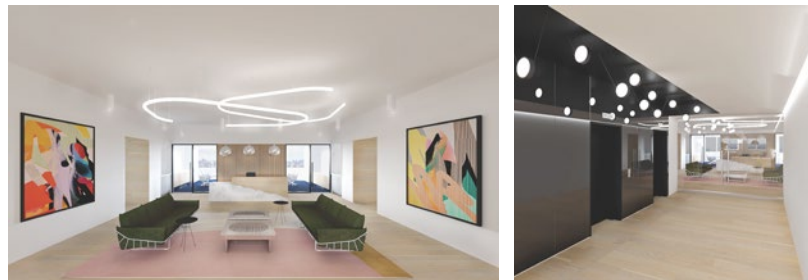
MISSISSAUGA



Full Floor Model Suite Coming Soon!

SUITE 300
20,161 SF

Coming soon to 2680 Skymark Avenue is a fully built-out, move-in ready model suite. Complete with high end finishes, efficient design and layout and options for customization, this will be a premier workspace in the coveted Airport Corporate Centre.



[VIEW FLOOR PLAN](#)



Ryan McAskile
Director, Leasing
647-727-4544
rmcaskile@crp-cpmi.com



crownrealtypartners.com

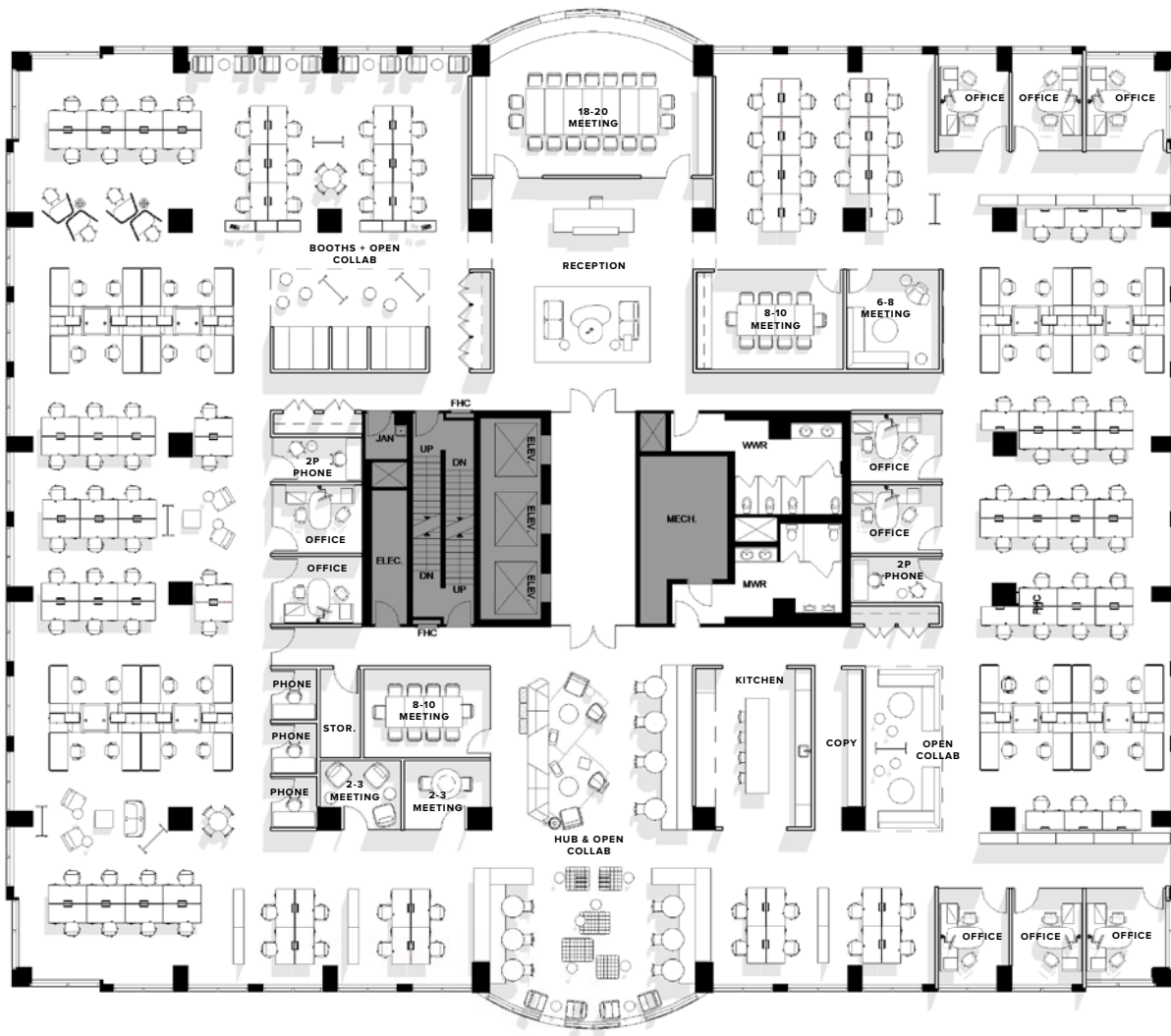


2630 + 2680

SKY MARK

MISSISSAUGA

SUITE 300
20,161 SF



Ryan McAskile
Director, Leasing
647-727-4544
rmcaskile@crp-cpmi.com



crownrealtypartners.com