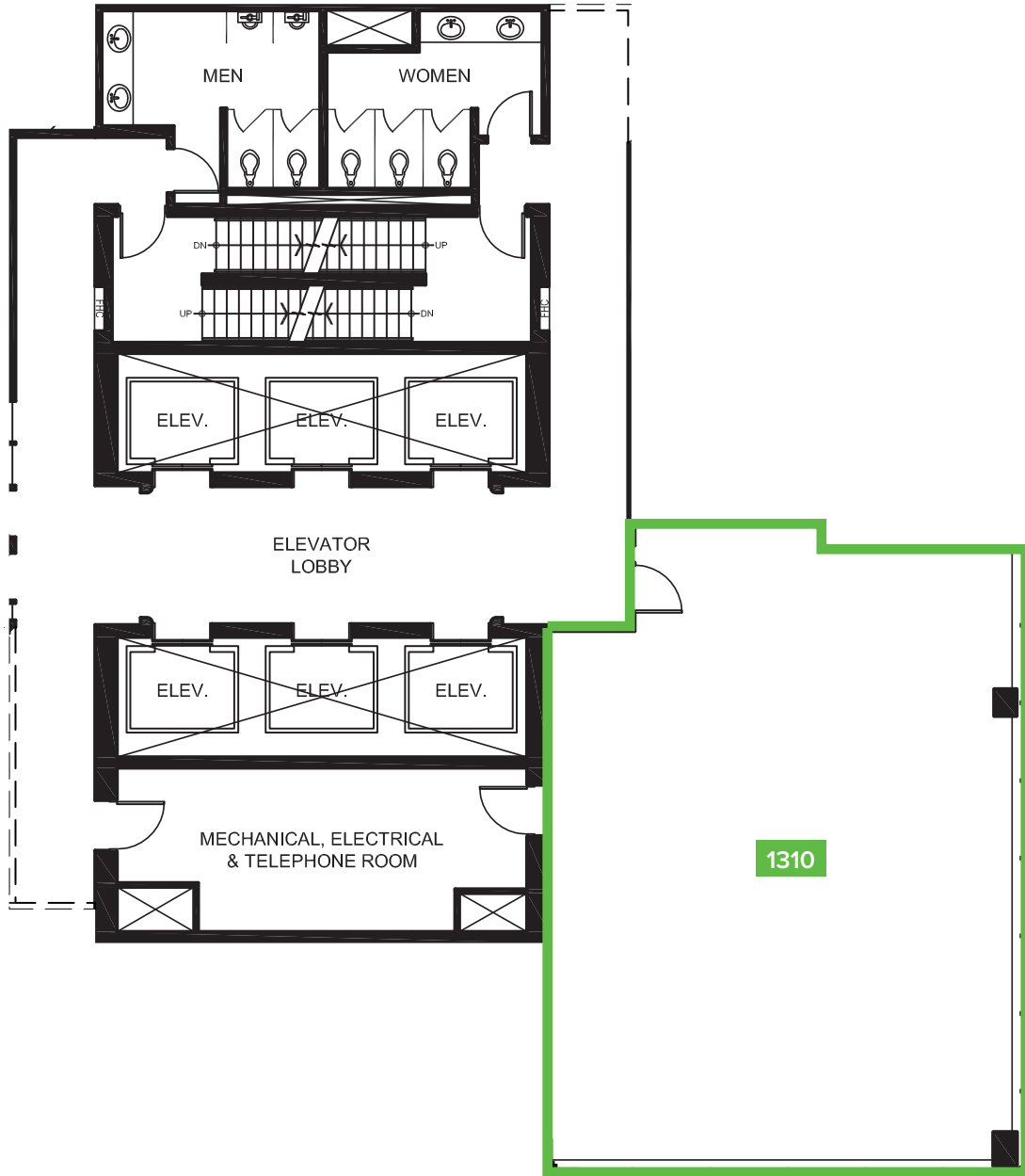




**10130 103 STREET CENTRE
EDMONTON, ALBERTA**



| SUITE | SQ. FT. | TYPE | AVAILABILITY | AVAILABLE SUITES |
|-------|---------|--------|--------------|--|
| 1310 | 1,402 | Office | Immediate | Three offices, reception & open areas. Turn-key options available. |

