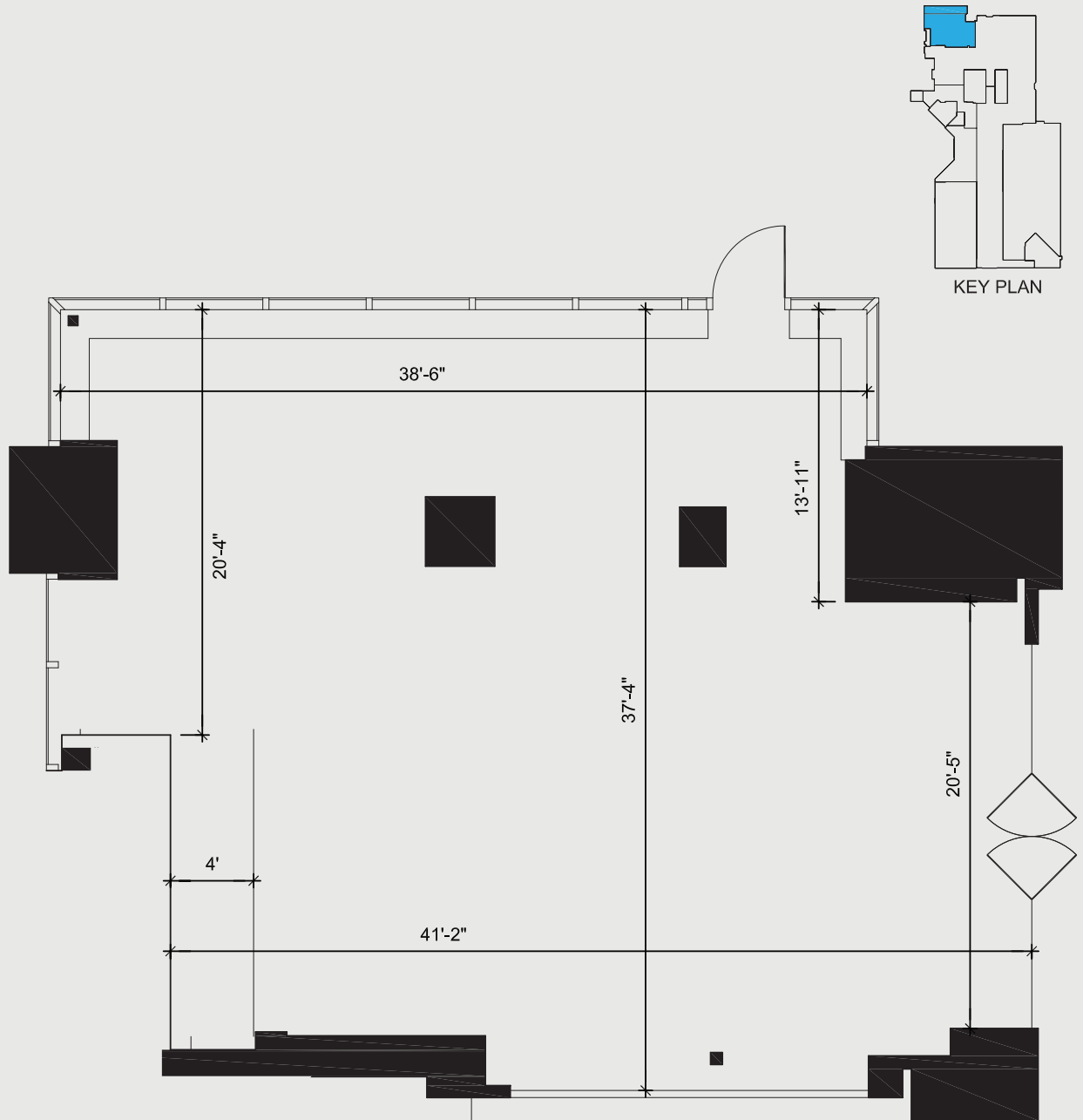


# HSBC Place

10250 101 Street  
Edmonton, Alberta



SUITE	SQ. FT.	TYPE	AVAILABILITY	AVAILABLE SUITES
150	1,743	Retail	Immediate	Featuring north face patio. Great opportunity for a cafe or food use.

**Cam Picketts**  
Partner | Broker  
780.437.7654  
cam.picketts@omada-cre.com

**Alex Fu**  
Associate  
780.540.5328  
alex.fu@omada-cre.com



epicinvestmentservices.com

All information contained herein is from sources deemed reliable; however, no representation or warranty is made to the accuracy thereof Epic Investment Services (Alberta) Inc.