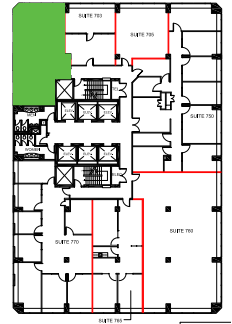
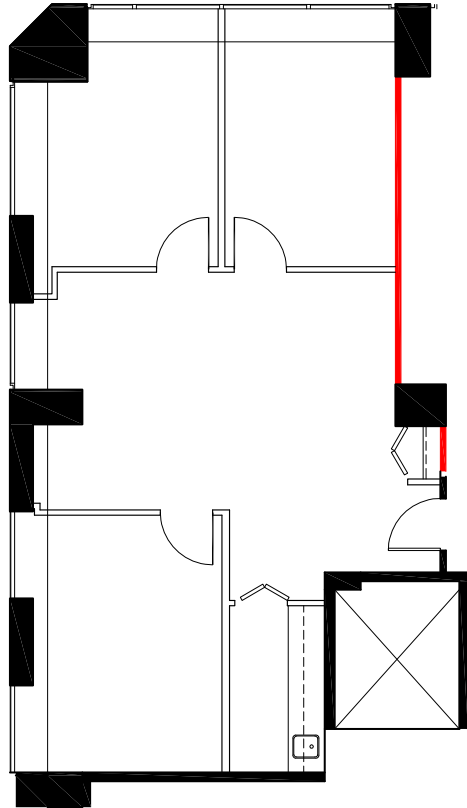


**141 ADELAIDE
STREET WEST
TORONTO**



KEY PLAN



 DEMISING WALL



SUITE	SQ. FT.	TYPE	AVAILABILITY	AVAILABLE SUITES
701	1,091	Office	Immediate	Corner suite built-out with two offices, meeting room, servery and open area.



John Shields*
Vice President, Leasing
416.558.9700
jshields@epicinvestmentservices.com

John Ebach**
Senior Manager, Leasing & Tenant Relations
416.497.1210
jebach@epicinvestmentservices.com