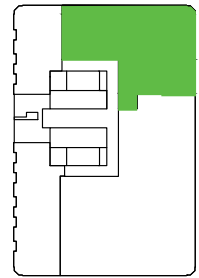
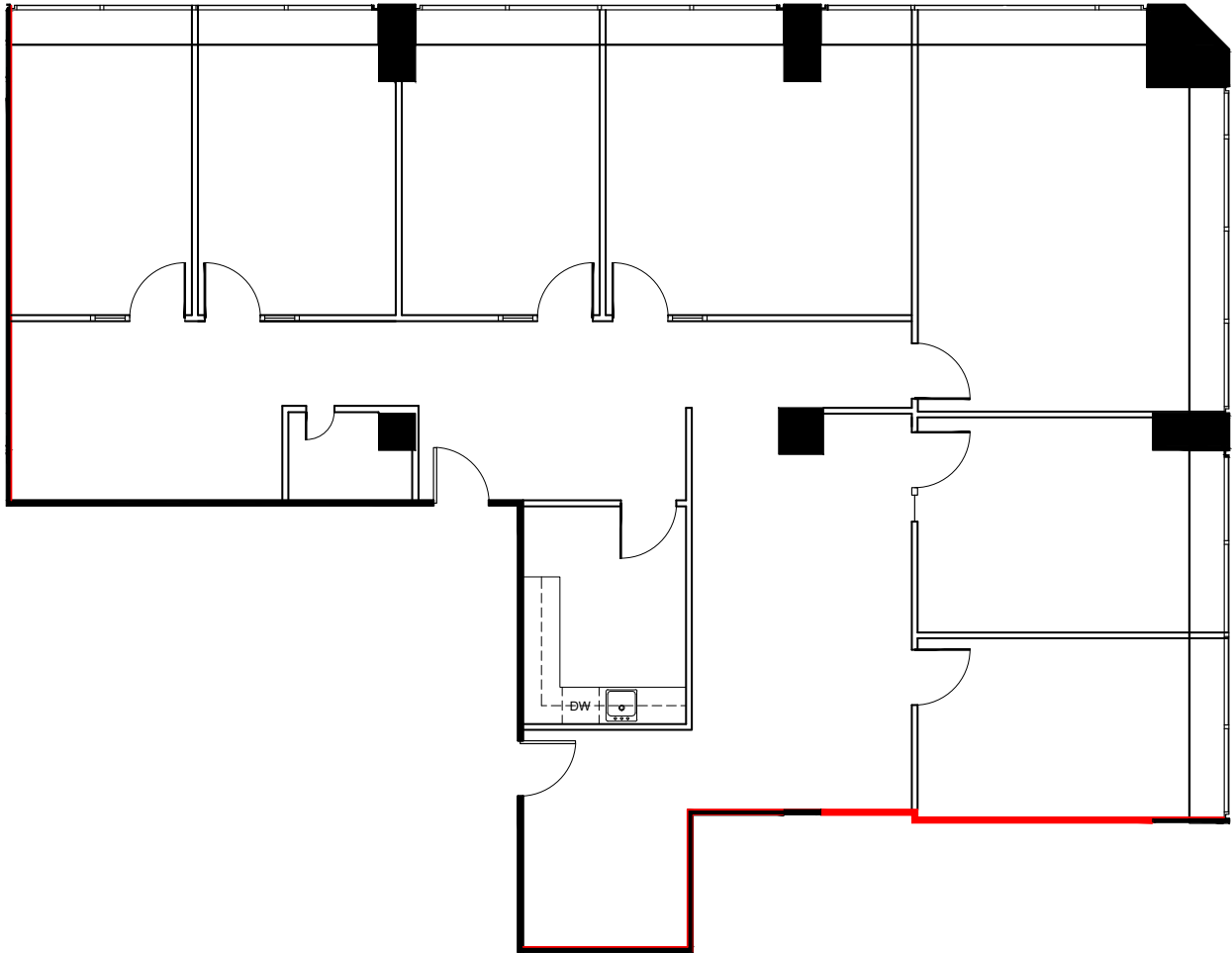


**141 ADELAIDE
STREET WEST
TORONTO**



KEY PLAN



DEMISING WALL



SUITE 420
RENTABLE AREA = 2,905 SF

ABOVE INFORMATION ESTABLISHED ACCORDING
TO BOMA / ANSI Z65.1 1996

SUITE	SQ. FT.	TYPE	AVAILABILITY	AVAILABLE SUITES
420	2,905	Office	Immediate	Corner suite built-out with 6 private offices, boardroom, servery and storage room. Feasibility floor plan available.



John Shields*
Vice President, Leasing
416.558.9700
jshields@epicinvestmentservices.com

John Ebach**
Senior Manager, Leasing & Tenant Relations
416.497.1210
jebach@epicinvestmentservices.com