

west

901 KING ST W

Floor Plans

Suite 701

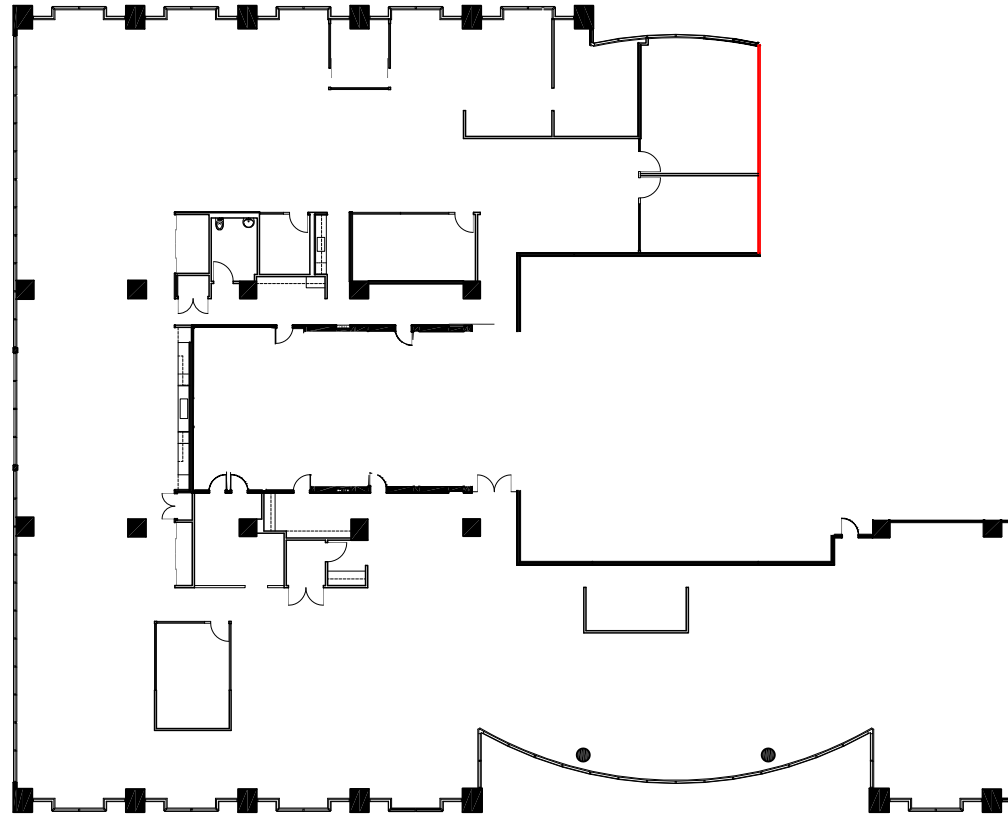
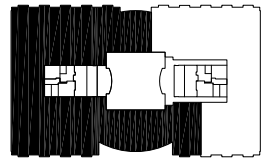
Size 19,586 sq. ft.

Available September 2022

Comments

Exceptionally designed space offering abundance of natural light, unique features and primarily open concept. Furniture can be made available.

KEY PLAN



FULLY
FURNISHED
SUITE



Get In Touch!

Christina Karam* | Director, Leasing | 416.572.3000 | ckaram@crp-cpmi.com

