

west

901 KING ST W

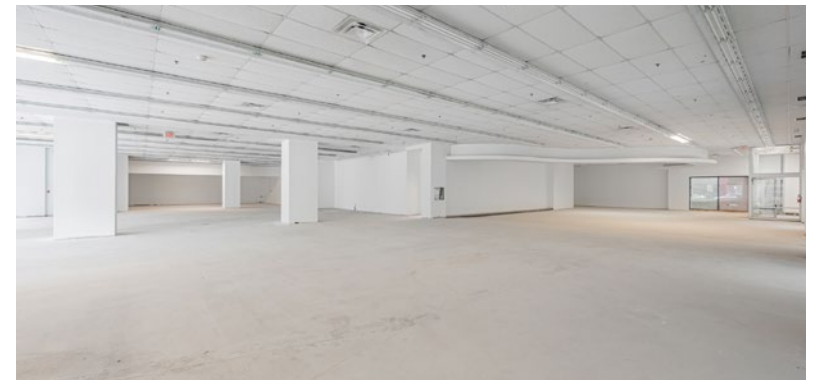
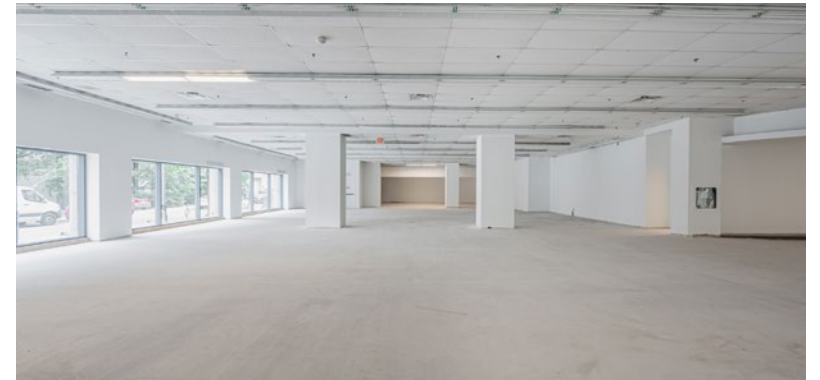
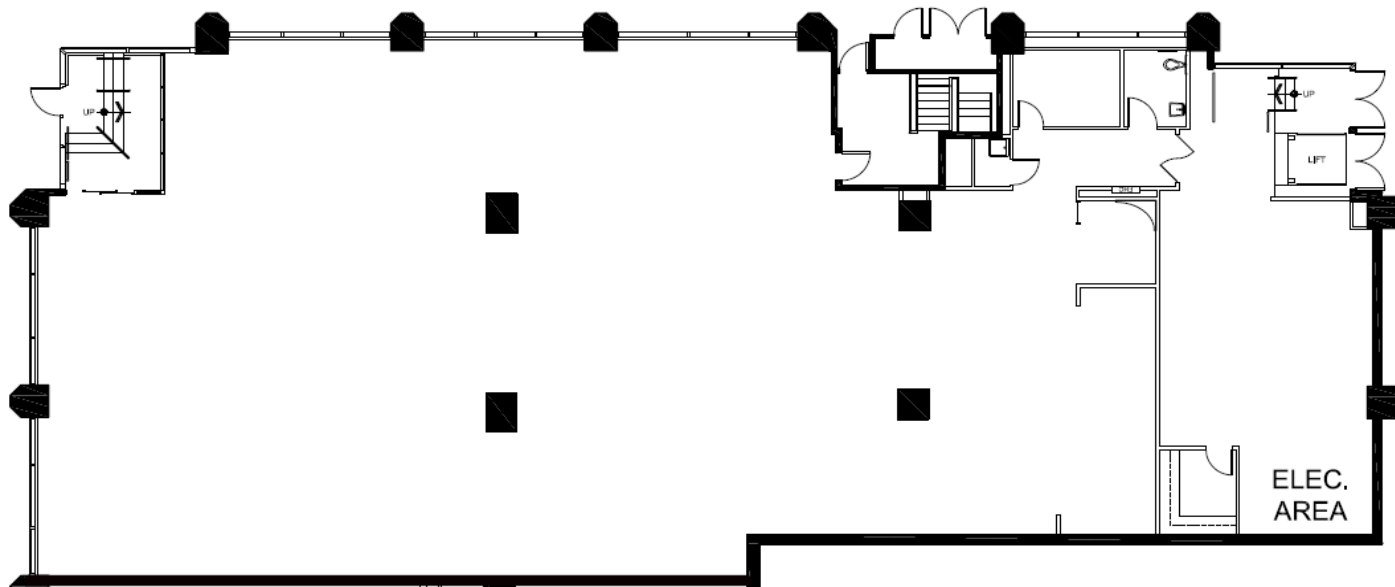
Floor Plans

Suite 103 (Ground Floor Retail)

Size 8,756 sq. ft.

Available Immediately

Comments Amazing ground floor opportunity with exposure to King Street West. Suitable for a multitude of uses. Divisible and customizable.



Get In Touch!

Christina Karam* | Director, Leasing | 416.572.3000 | ckaram@crp-cpmi.com

