

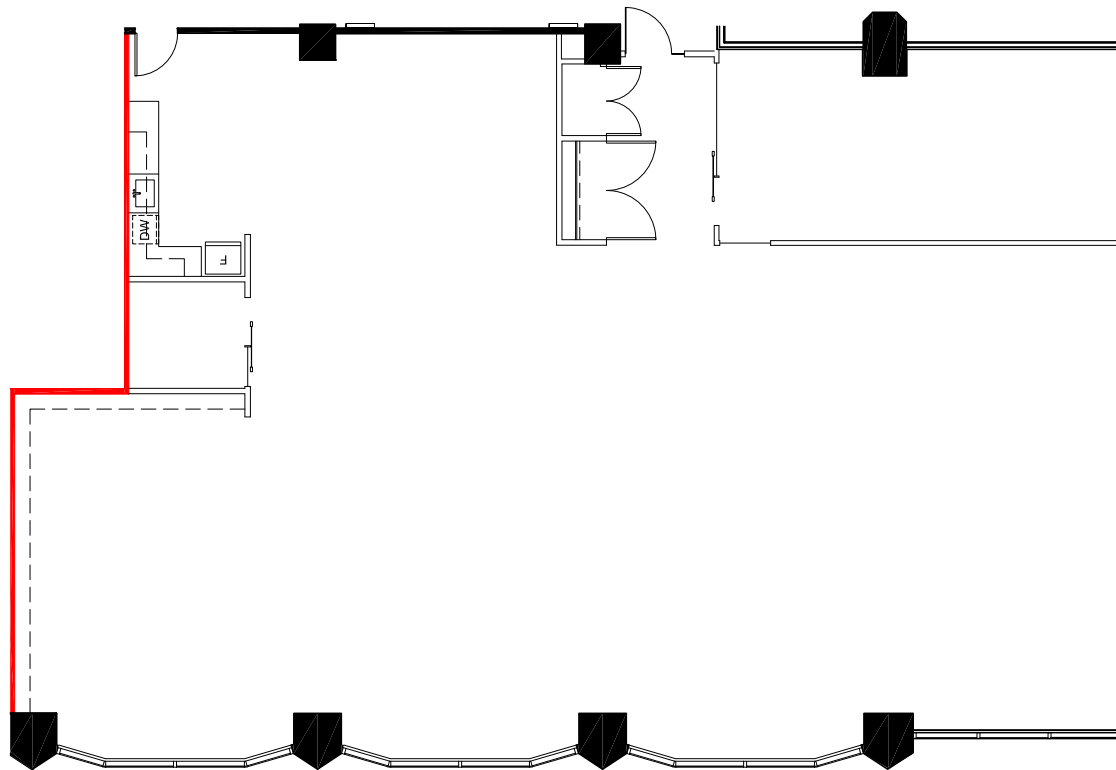
west

901 KING ST W

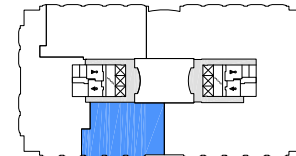
Floor Plans

Suite 520
Size 4,444 sq. ft.
Available September 2022

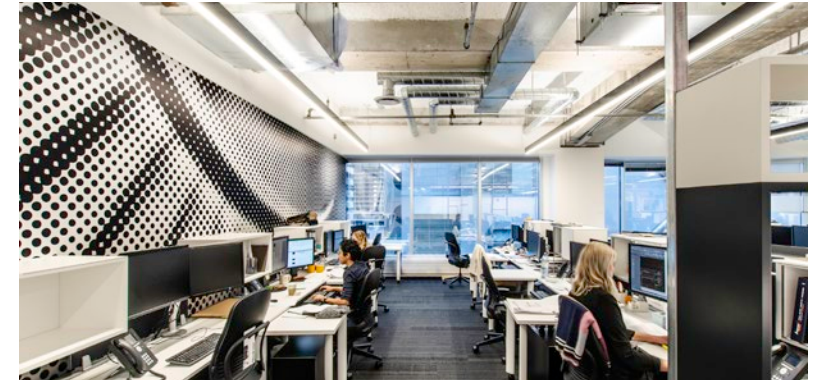
Comments Come check out this incredibly designed, funky space! Exposed ceiling, polished concrete and unique finishes throughout. Primarily open layout with plenty of natural light. Furniture can be made available.



KEY PLAN



FULLY
FURNISHED
SUITE



Get In Touch!

Christina Karam* | Director, Leasing | 416.572.3000 | ckaram@crp-cpmi.com

CROWN
MORE THAN SQUARE FOOTAGE

20
YEARS