



Version	Created: 04/23/2021
<b>V1</b>	Measured: N/A

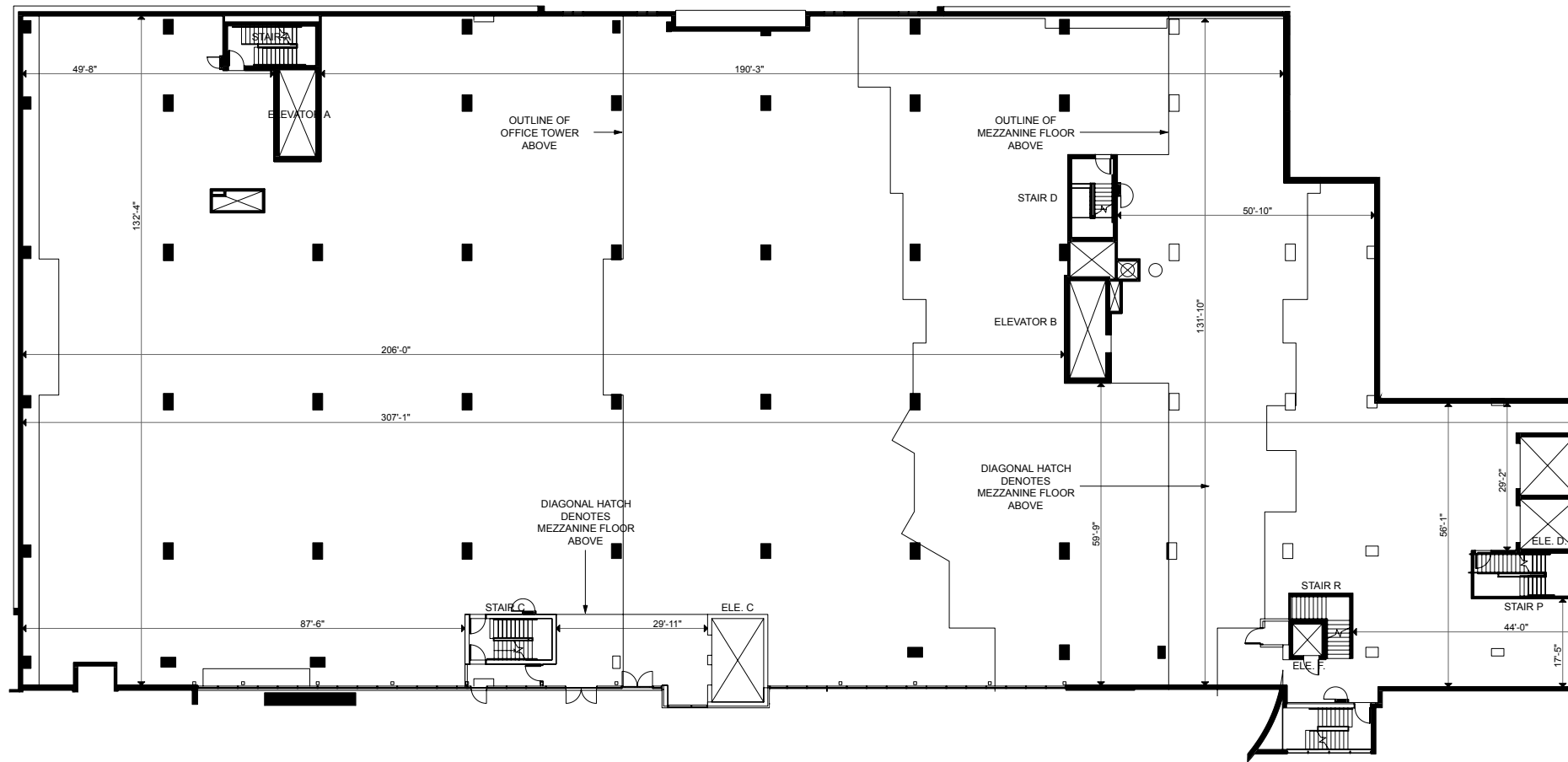
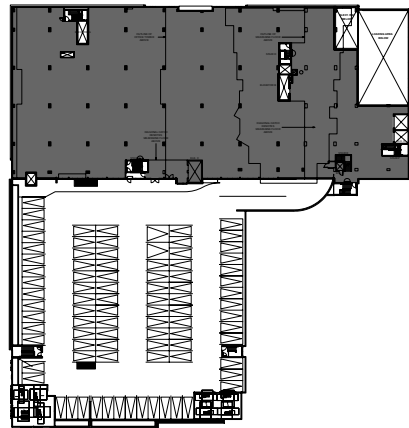
90 Collier Street  
 Barrie, Ontario, Canada  
**Retail 10- Floor 02**

41,110 sq ft  
 Please refer to corresponding  
 BOMA Office 1996 Area Chart:  
 90collier-b96-1a.pdf



This work product has been prepared by Extreme Measures Inc. pursuant to a contract with the Client for the sole benefit of and use by the Client. No third party may rely on this work product without the receipt of a reliance letter from Extreme Measures Inc.

This work product or portions thereof relies upon information provided by the Client and/or from third parties introduced by the Client that has not been independently verified by Extreme Measures Inc. Extreme Measures Inc. is not liable for any errors, omissions or inaccuracies that may result from such information.

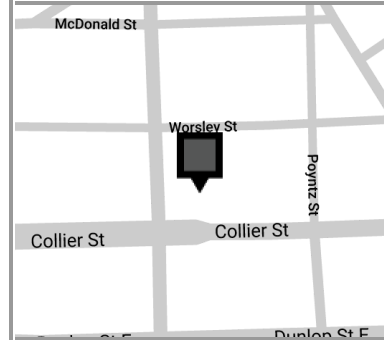




Version	Created: 04/23/2021
V1	Measured: N/A

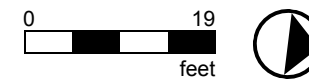
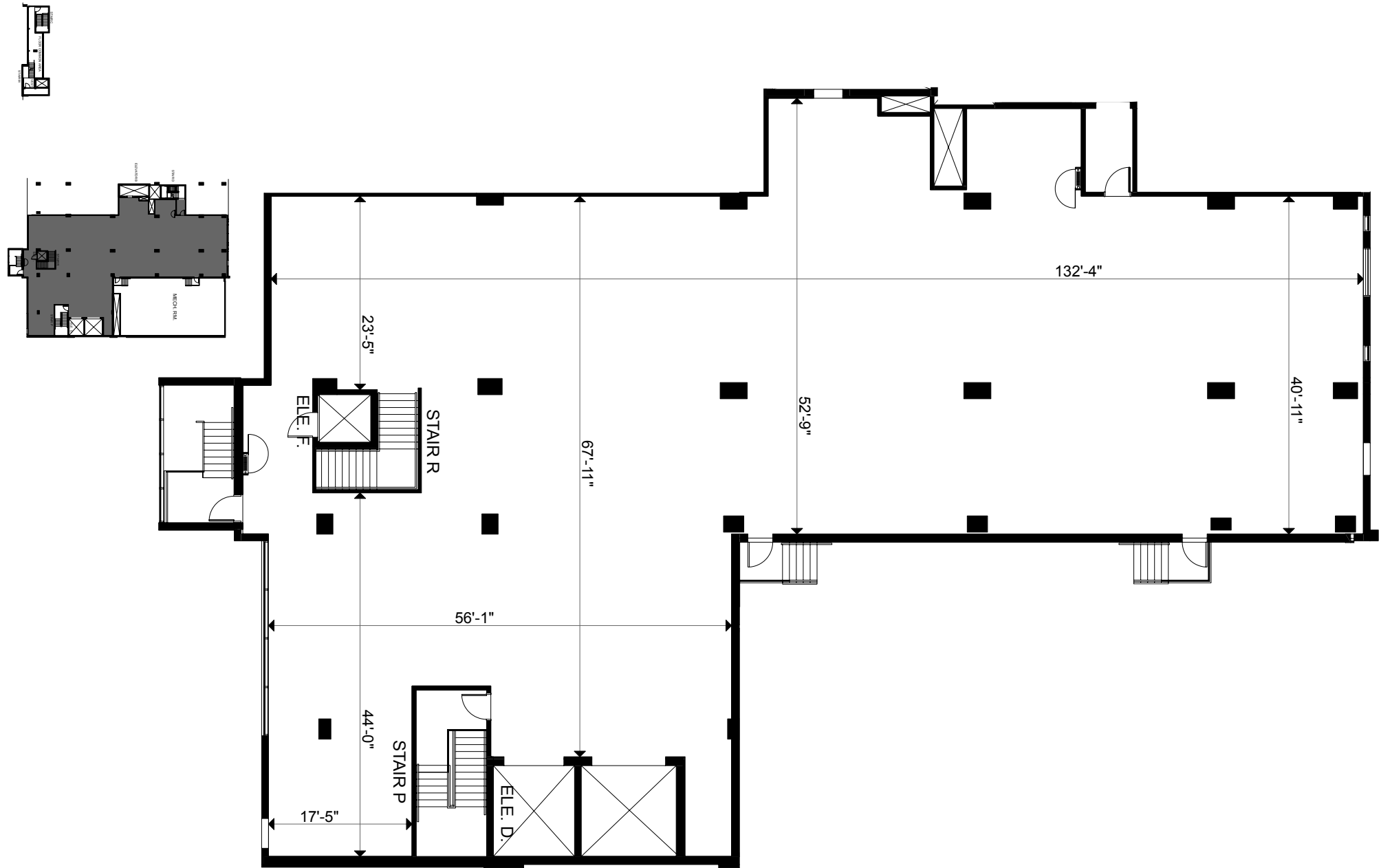
90 Collier Street  
Barrie, Ontario, Canada  
**Retail 10 Mezzanine**

8,896 sq ft  
*Please refer to corresponding  
BOMA Office 1996 Area Chart:  
90collier-b96-1a.pdf*



This work product has been prepared by Extreme Measures Inc. pursuant to a contract with the Client for the sole benefit of and use by the Client. No third party may rely on this work product without the receipt of a reliance letter from Extreme Measures Inc.

This work product or portions thereof relies upon information provided by the Client and/or from third parties introduced by the Client that has not been independently verified by Extreme Measures Inc. Extreme Measures Inc. is not liable for any errors, omissions or inaccuracies that may result from such information.

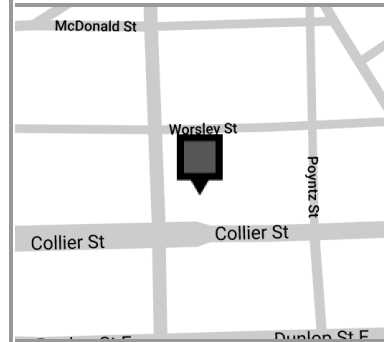




Version	Created: 04/23/2021
V1	Measured: N/A

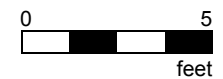
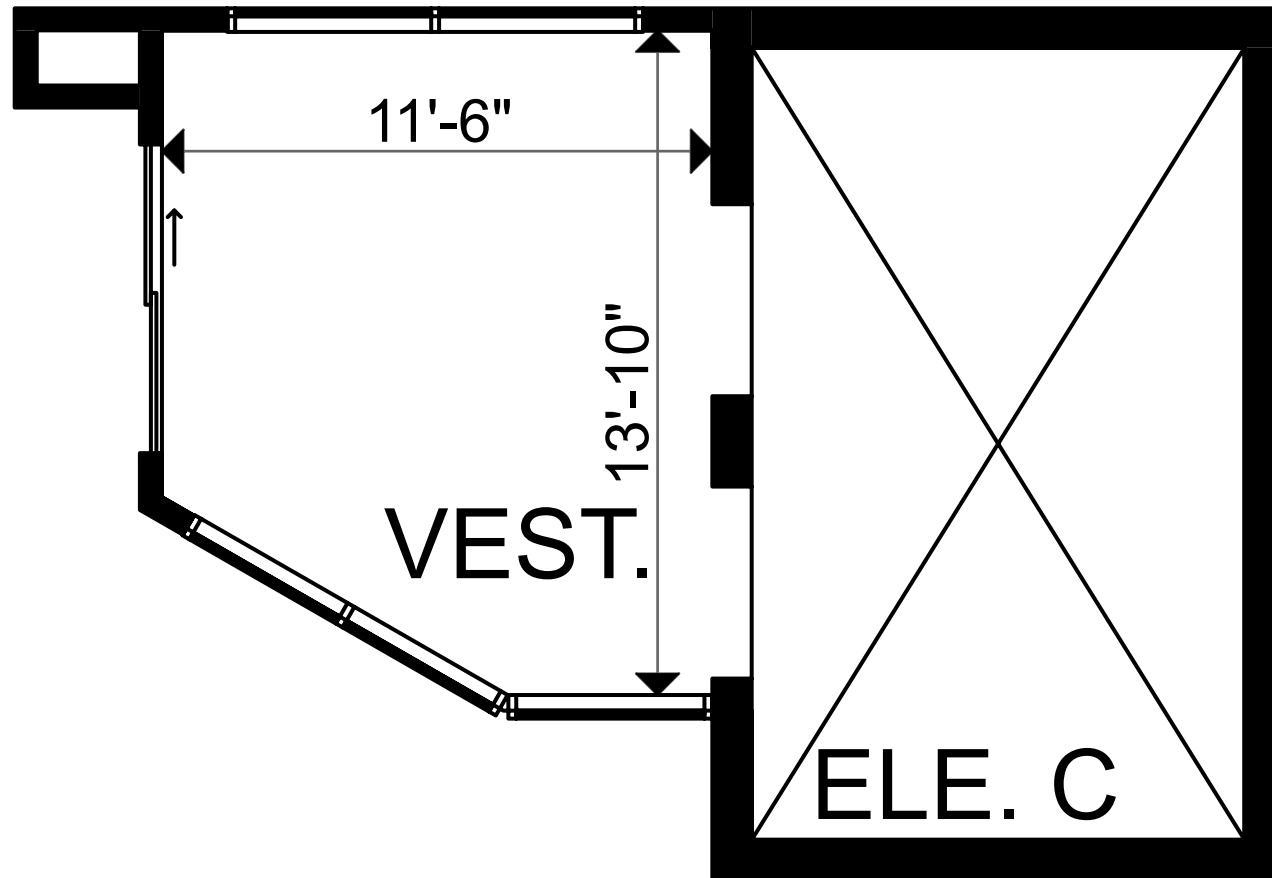
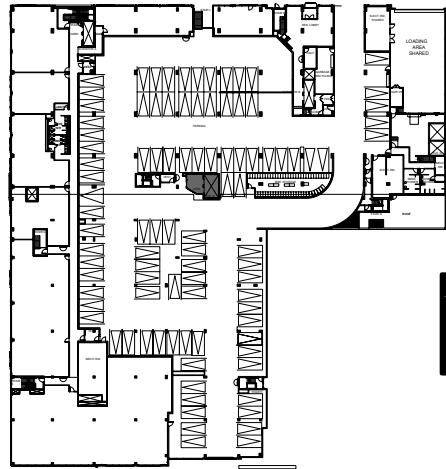
90 Collier Street  
Barrie, Ontario, Canada  
**Retail 10 - Floor 01**

426 sq ft  
*Please refer to corresponding  
BOMA Office 1996 Area Chart:  
90collier-b96-1a.pdf*



This work product has been prepared by Extreme Measures Inc. pursuant to a contract with the Client for the sole benefit of and use by the Client. No third party may rely on this work product without the receipt of a reliance letter from Extreme Measures Inc.

This work product or portions thereof relies upon information provided by the Client and/or from third parties introduced by the Client that has not been independently verified by Extreme Measures Inc. Extreme Measures Inc. is not liable for any errors, omissions or inaccuracies that may result from such information.

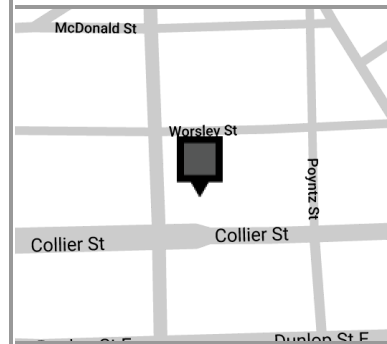




Version <b>V1</b>	Created: 04/23/2021 Measured: N/A
----------------------	--------------------------------------

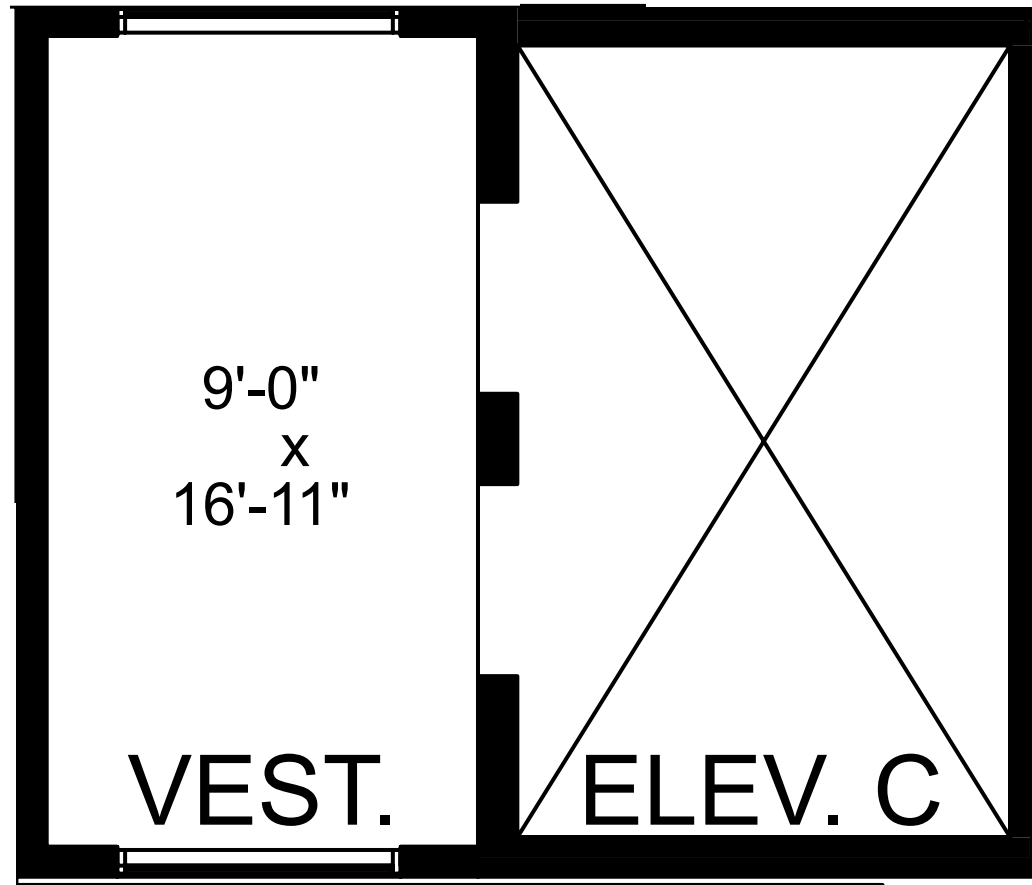
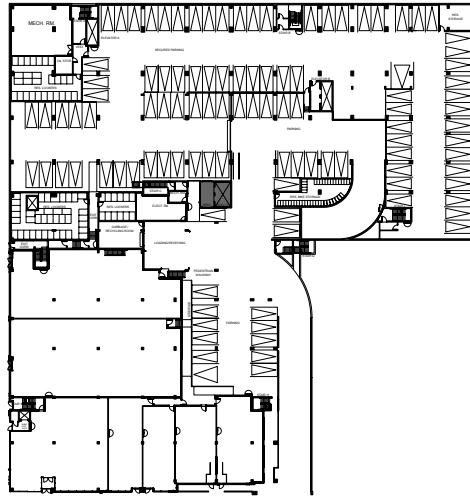
90 Collier Street  
Barrie, Ontario, Canada  
**Retail 10 - P2 Level**

394 sq ft  
*Please refer to corresponding  
BOMA Office 1996 Area Chart:  
90collier-b96-1a.pdf*



This work product has been prepared by Extreme Measures Inc. pursuant to a contract with the Client for the sole benefit of and use by the Client. No third party may rely on this work product without the receipt of a reliance letter from Extreme Measures Inc.

This work product or portions thereof relies upon information provided by the Client and/or from third parties introduced by the Client that has not been independently verified by Extreme Measures Inc. Extreme Measures Inc. is not liable for any errors, omissions or inaccuracies that may result from such information.

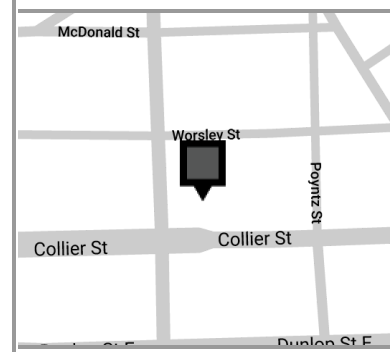




Version	Created: 04/23/2021
<b>V1</b>	Measured: N/A

90 Collier Street  
Barrie, Ontario, Canada  
**Retail 10 - P1 Level**

383 sq ft  
*Please refer to corresponding  
BOMA Office 1996 Area Chart:  
90collier-b96-1a.pdf*



This work product has been prepared by Extreme Measures Inc. pursuant to a contract with the Client for the sole benefit of and use by the Client. No third party may rely on this work product without the receipt of a reliance letter from Extreme Measures Inc.

This work product or portions thereof relies upon information provided by the Client and/or from third parties introduced by the Client that has not been independently verified by Extreme Measures Inc. Extreme Measures Inc. is not liable for any errors, omissions or inaccuracies that may result from such information.

