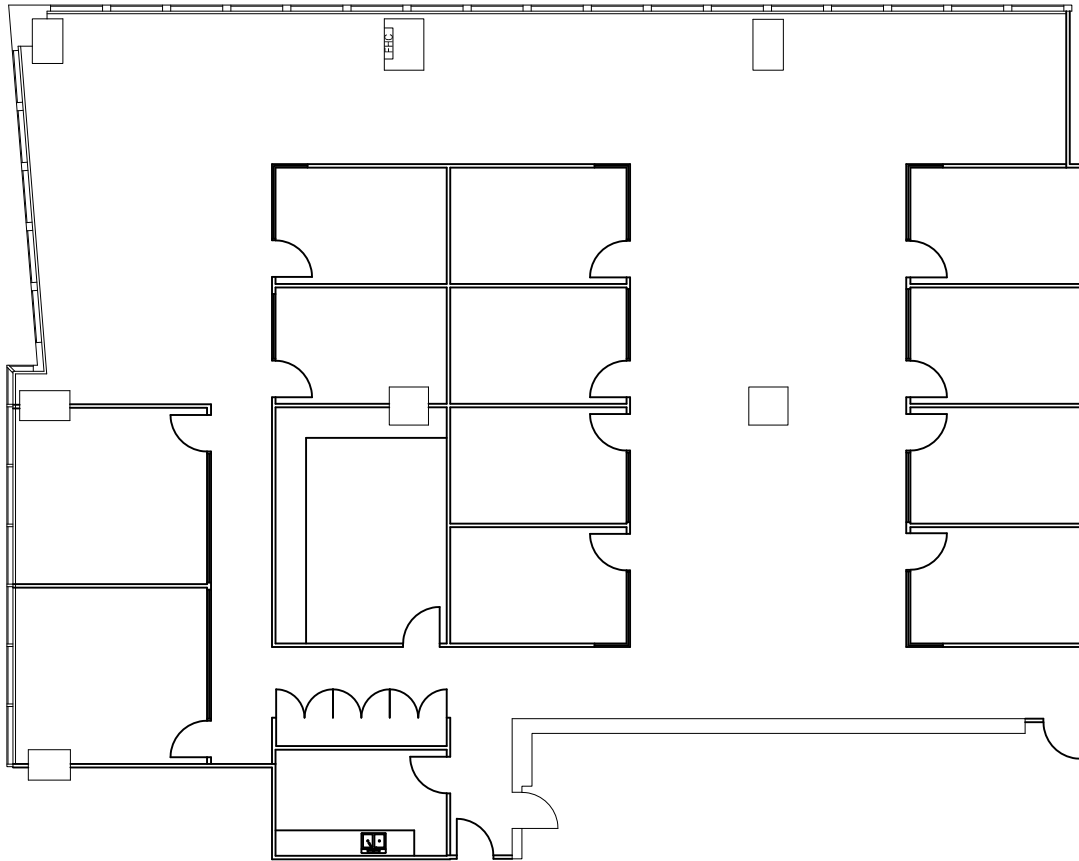


KEY PLAN



THIS IS TO CERTIFY THE AREA SHOWN ON THIS PLAN WAS DETERMINED FROM FIELD MEASUREMENT, AND FURTHER THAT THE AREA SHOWN IS IN COMPLIANCE WITH BOMA STANDARD ANSIZ.65.1-1996

SUITE 802
6,812 SQ.FT. (RENTABLE)

PREPARED FOR: 	LOCATION: 8TH FLOOR 5000 YONGE STREET TORONTO, ONTARIO		PREPARED BY: MEASUREX DATE: JUNE 17, 2021 FILE: 5000YO-8-2 MSMT: ANSIZ65.1-1996
--	---	---	--