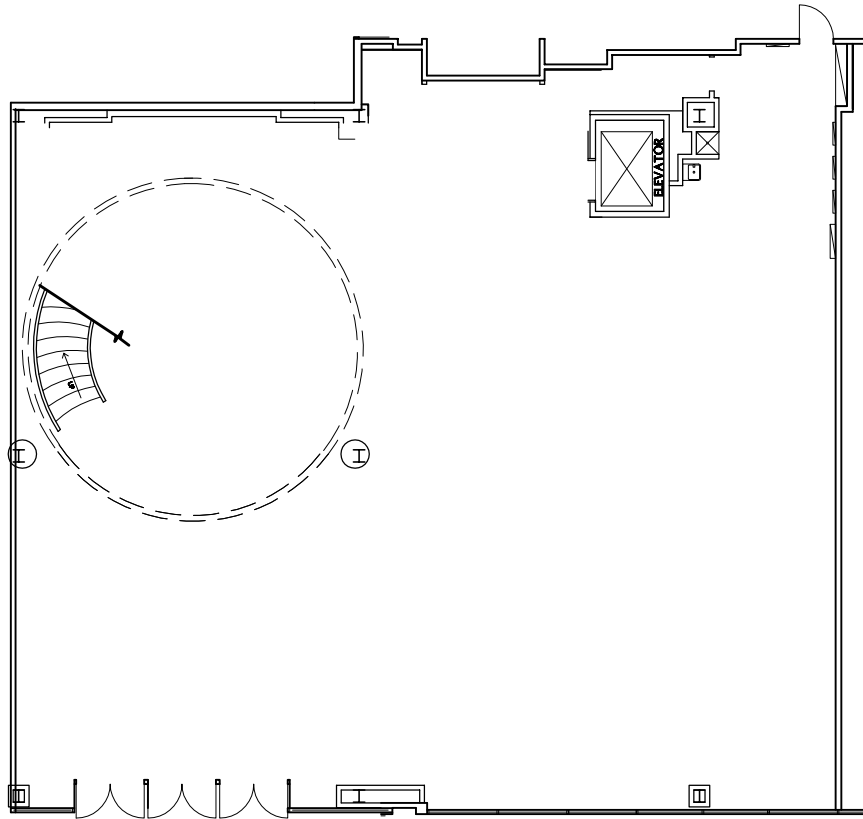
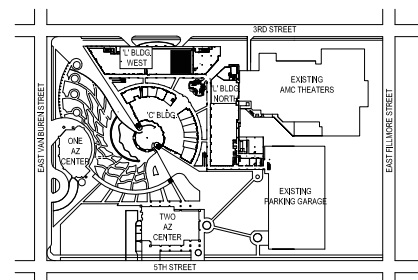


ARIZONA CENTER - BUILDING "L" FLOOR PLAN



455 N 3rd Street
Phoenix, AZ
Suite 1045 (1st Floor)
4,792 SF
01/04/17



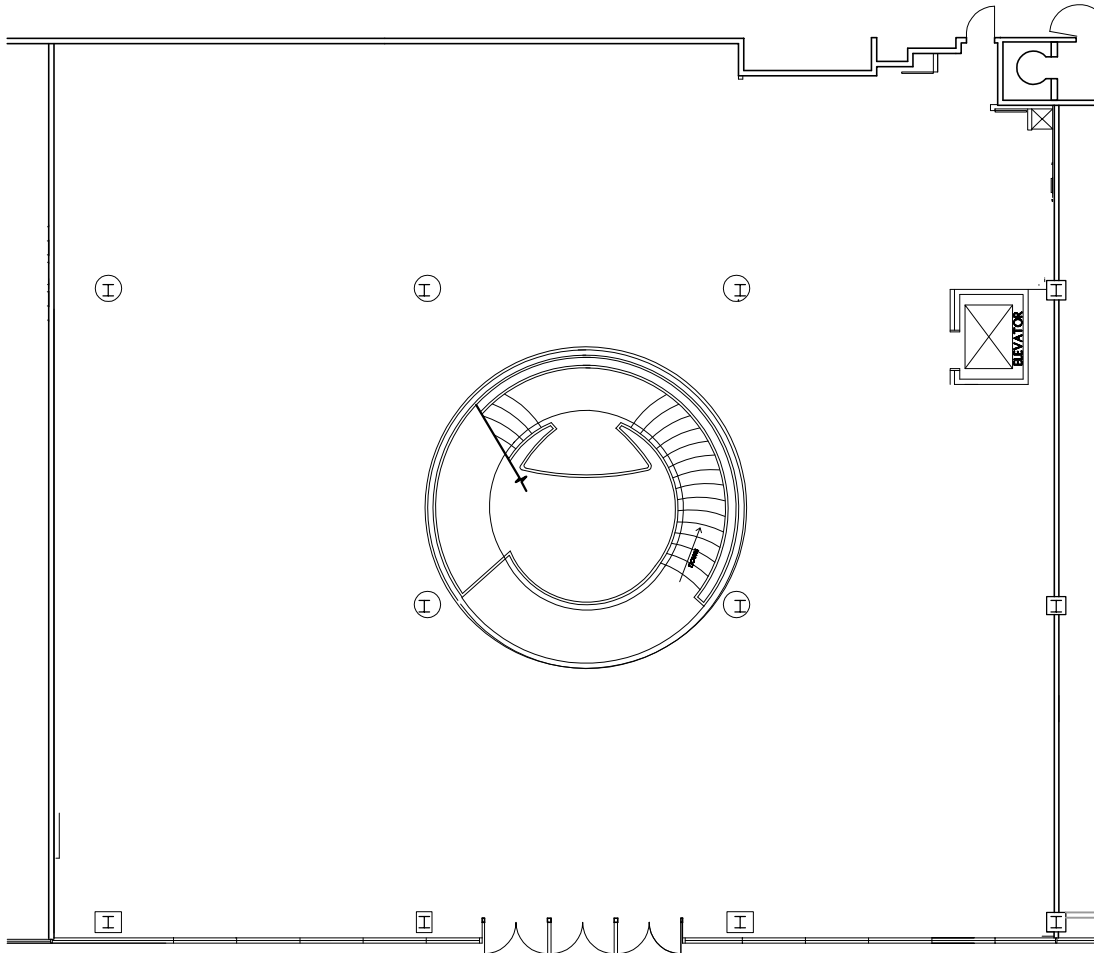
NORTH

ARIZONA CENTER SITE PLAN

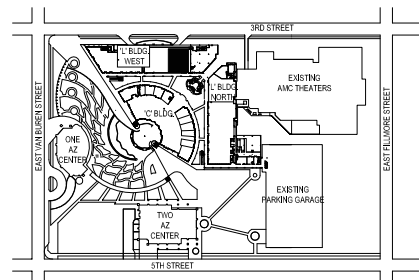
Please refer to architectural drawings for dimensions.



ARIZONA CENTER - BUILDING "L" FLOOR PLAN



455 N 3rd Street
Phoenix, AZ
Suite 1045 (2nd Floor)
7,644 SF
01/04/17



ARIZONA CENTER SITE PLAN

Please refer to architectural drawings for dimensions.



NORTH